

**14 Shelley Place, Wetherill Park, NSW 2164**



**Sold House**

Thursday, 12 October 2023

14 Shelley Place, Wetherill Park, NSW 2164

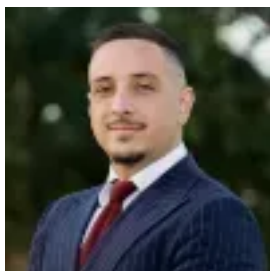
**Bedrooms: 5**

**Bathrooms: 2**

**Parkings: 2**

**Area: 570 m2**

**Type: House**



Aldo Pecora  
0296097099

## Contact agent

Aldo Pecora from Ray White Wetherill Park and Cecil Hills is proud to present 14 Shelley Place, Wetherill Park. Nestled in arguably one of the most highly sought after locations of Wetherill Park, this spacious and immaculately presented, three bedroom home with separate out building all whilst perfectly set in a quiet cul de sac. As you enter the property, you'll be greeted by a large and open living area that seamlessly flows into the dining and kitchen area. The backyard is perfect for entertaining guests or simply relaxing with your family, with plenty of space for outdoor activities. Situated in the prime location of Wetherill Park, it is conveniently located within minutes of nearby amenities including Fairfield Hospital, Stockland's Wetherill Park and schools. Featuring:- Well maintained kitchen featuring modern stone benchtops, stainless steel appliances and custom joinery.- Three sizeable bedrooms all with built in wardrobes.- Garage suitable for teenage retreat.- Led downlights and split system air-conditioning.- Main bathroom being freshly renovated fitted with floor to ceiling tiles.- Separate teenage retreat/in law accommodation. Situated in the prime location of Wetherill Park, it is conveniently located within minutes of nearby amenities including Fairfield Hospital, Stockland's Wetherill Park and schools. Disclaimer: All information we have provided we believe is to be true & accurate as to what the vendor has provided us. Please refer to the T&Cs of the sales contract as this property will be sold as is at auction with no cooling off period.