

14 Somerset Crescent, Croydon, Vic 3136

Sold House

Tuesday, 19 December 2023

14 Somerset Crescent, Croydon, Vic 3136

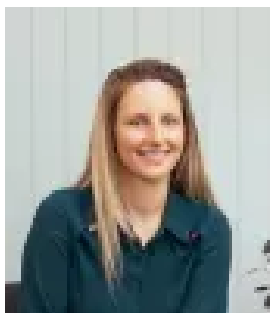
Bedrooms: 4

Bathrooms: 2

Parkings: 4

Area: 924 m2

Type: House



Donna Walpole
0385806200



Karen Vogl
0438072370

Contact agent

With undeniable family warmth across a floorplan that has been designed for relaxation, this newly renovated residence on 924 sqm (approx.) reveals itself amidst leafy serenity, promising an escape of exceptional indoor-outdoor living and entertaining. With its established garden surrounds, the house rests in a gently elevated position that encourages private tranquillity, whilst inside, the home is instantly inviting with a contemporary style complementing the verdant environment. Enjoying cascades of natural light and panoramic views, the open-plan living area with cathedral ceilings and a woodburning fireplace relishes the luxury of space, sunshine, and a seamless connection with the outdoors – effortlessly connecting to the sprawling deck through sliding doors. Adjoining the living zone sits the kitchen which has been flawlessly appointed with stone benches, a comprehensive suite of stainless-steel appliances and volumes of storage. Ideal for growing families, the accommodation is generous and aptly zoned, with the master bedroom enjoying the comfort of built-in robes and a beautiful open fireplace, whilst the remaining three robed bedrooms are supported by a sleek main bathroom that features a bath and shower. Enhanced with ducted heating and ducted air-conditioning, hardwood floors, second bathroom and large laundry, fire pit area, cubby house, 7000lt water tank and a four-car carport with extra height access for caravan storage, the property is perfectly positioned within a short walk to Croydon Central Shopping Centre, Croydon Train Station, Main Street and Croydon Primary School; with Luther College, Good Shephard Primary School, Yarra Valley Grammar, Eastland and EastLink just moments away.