

14 Strong Drive, Hampton Park, Vic 3976

Sold House

Friday, 29 March 2024

14 Strong Drive, Hampton Park, Vic 3976

Bedrooms: 3

Bathrooms: 1

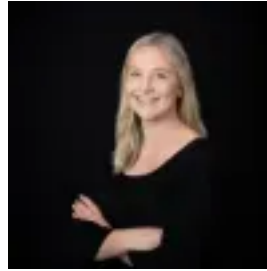
Parkings: 2

Area: 808 m2

Type: House



Zino Rebello
0397054888



Maddy Johnson
0397076000

\$750,000

Introducing a charming haven nestled in a prime Hampton Park area. This tastefully renovated home offers a warm welcome and inviting atmosphere where every detail has been thought out. Sunlight flows through the interior, highlighting the modern gourmet kitchen, featuring timber benches, top-notch appliances, and plenty of storage. Adjacent to the kitchen, a spacious dining and large living area sets the stage for enjoyable gatherings with a second separate living area that flows to outside, combining both inside and out. Step outside to explore the serene outdoor space, complete with landscaped gardens and a generous backyard. Conveniently located near Hampton Park shopping centre and Hampton Park Secondary College, with Narre Warren train station and Fountain Gate shopping centre just a short distance away, this home offers luxury living with easy access to amenities. Situated on a generous 808sqm parcel of land, this property holds potential for subdivision (STCA) or simply provides ample space for enjoying outdoor activities whether it's with the kids, animals or friends. A standout feature of this property is the massive 9.0m x 6.0m garage with rear roller door access, complete with a functioning toilet and kitchenette. Don't miss out on the opportunity to make this delightful home yours—schedule a viewing before it's too late.