

14 Titian Court, Grovedale, Vic 3216



House For Sale

Wednesday, 12 June 2024

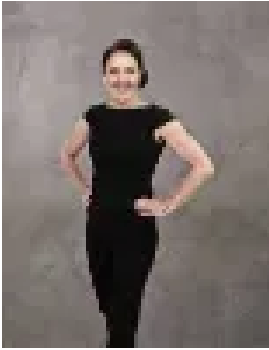
14 Titian Court, Grovedale, Vic 3216

Bedrooms: 4

Bathrooms: 2

Parkings: 4

Type: House



Michelle Winckle
0352411488



Sophie Spowart
0478957905

\$795,000 - \$845,000

Situated on an expansive 854 sqm allotment, in a quiet court location, this ultimate family paradise is sure to win your heart. Freshly modernized and ready to move straight in! Comprising of 4 bedrooms and three living spaces. This spacious and light-filled residence is fully equipped for all family members. Boasting an expansive floorplan, as you enter the home you'll be greeted into the central living, dining, and kitchen. The fully equipped kitchen includes a 900mm electric oven and gas cooktop, dishwasher, and beautiful stone benchtops. The home also provides a formal lounge or study, perfect for those working from home. The spacious third living area is the perfect space for a man cave, playroom, or entertainment room with sliding doors opening up to large the backyard, perfect for entertaining all year round. Comprising of 4 large bedrooms, all with built-in robes. The master suite includes a spacious walk-in robe and ensuite. The central bathroom oozes luxury with a deep freestanding bath, a large shower, floor-to-ceiling tiles, and a large vanity. Other features of the home include:- Two fireplaces, perfect for those cozy winter nights. - Ceiling fans in all the bedrooms. - a split-system air-conditioner for all year-round comfort. - Double garage. - Large and secure backyard perfect for kids and pets to play. - Solar panels - Large outdoor entertainment area, ideal for family gatherings. Located in a family-friendly neighborhood, everything you need is right at your fingertips. With schools, shops, parks, and public transport within easy reach, convenience is key. Enjoy the best of both worlds with superior Ring Road access connecting you to Melbourne and the Surf Coast, while Deakin University, Epworth Hospital, and Waurin Ponds Shopping Centre are just moments away.*All information about the property has been provided to Hayeswinckle by third parties. Hayeswinckle has not verified the information and does not warrant its accuracy or completeness. Parties should make and rely on their own enquiries in relation to this property.