

**14 Tootle Street, Kilmore, Vic 3764**



**Sold House**

Thursday, 9 November 2023

**14 Tootle Street, Kilmore, Vic 3764**

**Bedrooms: 4**

**Bathrooms: 2**

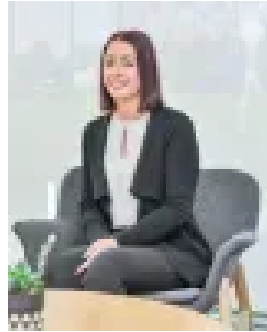
**Parkings: 2**

**Area: 760 m2**

**Type: House**



Kieran Knight  
0357831268



Jade Tomass  
0357831268

## Contact agent

Situated on a spacious 760m<sup>2</sup> plot (approximately) within the Meier's Run Estate, this single-story residence embodies all the features desired by modern families. The well-proportioned interior ensures a comfortable lifestyle and sets a perfect backdrop for creating cherished memories. The thoughtfully designed layout guides you into a naturally lit lounge area, leading seamlessly into a contemporary, well-equipped kitchen that opens up to a spacious family room. Sleeping arrangements are ample with four bedrooms, each equipped with a walk-in robe. The primary bedroom serves as a private sanctuary, featuring an ensuite bathroom with dual vanities. A family bathroom, complete with a bathtub, standalone shower, and separate toilet, conveniently caters to the other bedrooms. Outdoors, a generously sized backyard offers endless play opportunities for children and pets, and holds potential for the creation of an inviting alfresco retreat. Additional features adding to the appeal include a laundry, a double garage with internal access, side access, ducted heating/cooling for optimal comfort, and aesthetically pleasing floating flooring. Conveniently located, this residence provides easy access to a variety of amenities, including Kilmore Primary School, Assumption College, Saint Patrick's Primary School, Broadford Secondary College, Kilmore East Railway Station, Kilmore Village, the town center, Centenary Reserve, Kilmore Golf Club, Racing Club, and the Hume Freeway