

14 Veronia Street, Marsden Park, NSW 2765

House For Sale

Wednesday, 12 June 2024



14 Veronia Street, Marsden Park, NSW 2765

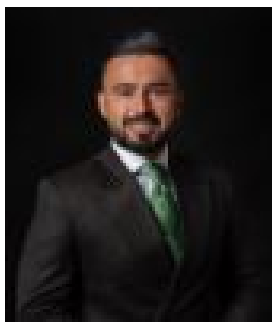
Bedrooms: 4

Bathrooms: 2

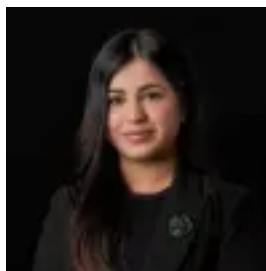
Parkings: 1

Area: 300 m2

Type: House



Amit Kumar
0288964336



Siya Sachdeva
0288964336

For Sale \$1,050,000 - \$1,120,000

Nestled in the desirable and rapidly growing suburb of Marsden Park, this meticulously designed home caters to your every need, offering a seamless blend of contemporary finishes and modern conveniences. The vibrant neighborhood provides access to essential amenities, schools, lush parks, and more, making it an ideal setting. The exceptional single-level property epitomizes modern family living with its well-thought-out design, spacious interiors, and stylish features. The home showcases a dynamic and versatile floor plan that effortlessly integrates the living, dining, and kitchen areas, establishing the heart of the home as a perfect space for both daily living and entertaining. An additional living area enhances the flexibility of the layout. Natural light floods the interior, creating a bright and inviting atmosphere that extends to the outdoor alfresco area and backyard, perfect for indoor-outdoor living and entertaining. The kitchen is a chef's dream, equipped with high-end quality stainless appliances, including a freestanding five-burner gas cooktop and 900mm oven. The stone benchtops with an eat-in breakfast bar adds a touch of luxury, while dishwasher and ample storage ensures functionality. The accommodation includes four generously sized bedrooms, each featuring built-in robes for optimal storage. The master bedroom offers a private retreat with a modern ensuite bathroom and a walk-in wardrobe. Features you will love:- Ideal East-facing aspect - Ducted air conditioning - Abundant natural light throughout the home, creating a bright and welcoming atmosphere- Tiled flooring throughout common areas- Extra living space for added versatility- Undercover alfresco area perfect for outdoor dining and entertaining, seamlessly connected to indoor living spaces.- Beautifully landscaped backyard requiring zero maintenance and plenty of room for kids to play or for hosting gatherings.- Double Lock-Up Garage: Secure parking with internal access

Location Highlights:- 3-minute drive to Northbourne Public School- 3-minute drive to the new Melonba High School - 2-minute drive to Elara Village Shopping Centre- 12-minute drive to Schofields Station- Easy commute to Westlink M7 off Richmond Road- Multiple parks nearby

Disclaimer: All information contained herein is obtained from property owners or third-party sources which we believe are reliable. We have no reason to doubt its accuracy, however, we cannot guarantee it. All interested person/s should rely on their own enquiries.