

14 Waverley Street, Annerley, Qld 4103



House For Sale

Thursday, 19 October 2023

14 Waverley Street, Annerley, Qld 4103

Bedrooms: 4

Bathrooms: 2

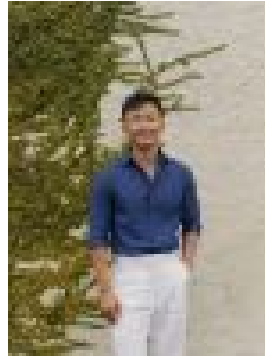
Parkings: 2

Area: 380 m2

Type: House



Morgan Lewis



Rafer Gao

0402641403

From \$1.05M Turnkey

* Home Not Yet Constructed, Images Indicative Only *Don't miss this rare chance to build your new bespoke residence just 6km from CBD, with a north-west outlook towards Mt Coot-Tha. Modify and customise to suit your budget and design requirements, with features such as open-plan living, entertaining indoor-outdoor space and private master suite. Turnkey options start from under \$1.05M. Lot 98: 380sqm Lot 99: 527sqm (Inc. Emt) Lot 100: 378sqm – RESERVED With schools, shops, multiple transport options, highly regarded cafes, a myriad of parks and recreational facilities, 3 hospitals and multiple universities all within close proximity, this premium location truly gives you the best of what inner city living in Brisbane has to offer! **Location Highlights**» 400m (1min) Our Lady's College - Annerley» 600m (2min) Lucky Cat Cafe» 600m (2min) Yeronga Community Gardens» 700m (2min) Yeronga Memorial Park» 800m (3min) Yeronga State High School» 900m (3min) Woolworths Annerley» 1km (3min) Mary Immaculate Primary School» 1.2km (3min) Fairfield Train Station» 1.4km (4min) Yeronga State School» 1.5km (3min) C&K Arnwood Place Community Childcare Centre» 1.9km (4min) Souths Junior Rugby Club» 2.1km (4min) Junction Park Primary School» 2.2km (5min) Fairfield Gardens Shopping Complex (Coles, Chemist, ALDI, Library)» 2.3km (6min) Princess Alexandra Hospital» 3.5km (7min) Greenslopes Private Hospital» 4km Walk (via Eleanor Schonell Bridge) to UQ (or 20min public transport)» 4.3km (7min) The Brisbane Golf Club» 6km Brisbane CBD This land is registered and ready to build on. Opportunities like this rarely become available this close to the CBD. Get in contact with B.E Property today for more information! Note: All images have been used for sales & marketing purposes & should be used as a guide only. Dimensions are approximate.