

14 Wimbledon Court, Wattle Grove, NSW 2173

House For Sale

Thursday, 16 November 2023

DEMIANS
ESTATE AGENTS

14 Wimbledon Court, Wattle Grove, NSW 2173

Bedrooms: 3

Bathrooms: 2

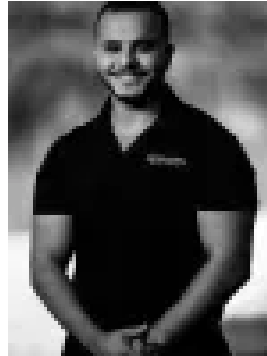
Parkings: 1

Area: 321 m2

Type: House



Michael Demian
0404601084



Mark Demian
0404601084

Private Negotiation

This neat and tidy 3 bedroom family home is proudly situated in a quiet cul-de-sac location, within close proximity to all the lifestyle options on offer in the popular suburb of Wattle Grove - Shopping Village, parks, schools, public transport, and the M5 Motorway. Filled with character and plenty of natural light, this property provides the perfect opportunity and is a clever catch for first-home buyers, investors or downsizers. You'll be impressed from the moment you arrive with its elevated position being well set back, thanks to the manicured front yard, and extra-long driveway that leads to the single garage. Entering the property, to your right - the master bedroom is privately positioned and features two built-in robes and an ensuite with a good-size shower. Continue through to the heart of the home and you'll be welcomed into a warm and inviting combined living and dining area, ideal for hosting formal gatherings or relaxed evenings. Moving onward to the combined living/dining area, you'll find an expansive space with a seamless flow to the outdoors. The impeccably maintained kitchen boasts a gas cooktop, ample storage space and expansive benchtops also serving as a breakfast bar. It's perfectly positioned, overseeing the family and dining areas. Sliding doors open seamlessly to the low-maintenance outdoor area with a paved area to entertain and a sunny level yard for kids and pets to enjoy all year round. The remaining two bedrooms are generous in space with built-in robes, one also has sliding door access to the outdoors and shares the family-sized main bathroom with shower, bath and separate toilet. This family home ticks all the right boxes for the perfect entry-level opportunity in Wattle Grove. - 3 good size bedrooms, all with BIWs - Ensuite to the main - Well-appointed gas cook-top kitchen with ample cupboard space - Three-way bathroom, with separate toilet - Single garage with internal access - Generous size low maintenance backyard with plenty of space for entertaining - Ducted A/C throughout