

140/450 Pacific Highway, Lane Cove North, NSW

Raine&Horne.

2066

Sold Apartment

Tuesday, 17 October 2023

140/450 Pacific Highway, Lane Cove North, NSW 2066

Bedrooms: 1

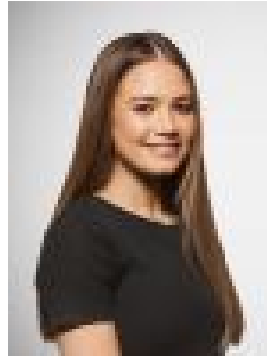
Bathrooms: 1

Parkings: 1

Type: Apartment



Oscar Nicholls
0283187888



Mackenzie Haines
0283187888

Contact agent

Easycare apartment with access to fantastic amenities Set in the character filled 'Shore Hotel' complex, this one bedroom double brick apartment presents a fantastic investment opportunity or lifestyle base for those after a low maintenance home set within walking distance of Artarmon Station. The interiors follow a fluid streamlined layout, opening onto an intimate walled courtyard with direct private street access. The property promises a cosmopolitan lifestyle of sheer convenience, set minutes from Chatswood CBD's major shopping precinct, with easy access to arterial roads.- Combined living/dining area enhanced by impressive soaring ceilings- Outdoor flow to intimate walled courtyard with direct street access- Functional kitchen with abundant bench and storage space - Spacious double bedroom offers wall-to-wall built-in wardrobes- Full bathroom features shower over bath, designated car space- Access to communal resort style facilities including swimming pool- Heated spa, gym and half tennis court, ideal for active individuals- Easycare open plan design offers the perfect carefree investment- Walk to cafes, eateries and shops, moments from Lane Cove Village Council Rates: \$352/Pq (approx.) Water Rates: \$135/Pq (approx.) Strata Rates: \$1,248/Pq (approx.)