

1402/145 Queensberry Street, Carlton, Vic 3053

Apartment For Sale

Friday, 17 May 2024



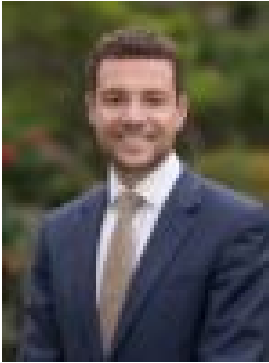
1402/145 Queensberry Street, Carlton, Vic 3053

Bedrooms: 2

Bathrooms: 2

Parkings: 2

Type: Apartment



James Fitzpatrick
0398105000



Antony Woodley
0421286741

Contact Agent

Expressions of Interest closing the 12th of June at 4pm
The embodiment of sophisticated luxury and monochromatic elegance fourteen floors up, presents this immaculate, high end residence within the coveted Eminence complex. Boasting sweeping city outlooks, undercover alfresco entertaining from its own private terrace and soaring proportions, minimalist living for the low maintenance executive has met its match. An airy sense of space and light elevates an expansive, open plan living and dining domain with floor to ceiling sliding doors, featuring a designer kitchen with marble island bench, endless storage, breakfast bar and integrated Miele appliances. Two generously sized bedrooms relishing city views, plush carpet and mirrored built in robes offer expertly appointed accommodation, including a spacious main with walk in robe and double vanity ensuite featuring walk in rain shower, ample storage and LED lighting. A sleek, contemporary central bathroom also features LED lighting, stone accents and a walk in shower. Working from home flexibility is catered for with a built in study nook. Additional attributes include a stone bench laundry, heating/cooling, concierge, rooftop entertaining and communal facilities such as a dining room, lounge zone and full service kitchen, plus lift access to secure basement parking for two vehicles, with two storage cages. A truly unbeatable locale places you on the doorstep of Carlton's infamous tree-lined streets steps from an endless array of cafes for your morning coffee, restaurants, pubs, bars, trams, Lygon Street entertaining, ALDI Supermarket, myriad parks including Carlton Gardens, and all within walking distance from the CBD. 1402 is a truly bespoke offering not to be missed.