

1407/6a Atkinson Street, Liverpool, NSW 2170



Sold Apartment

Sunday, 13 August 2023

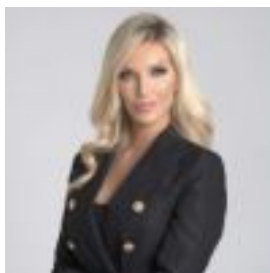
1407/6a Atkinson Street, Liverpool, NSW 2170

Bedrooms: 2

Bathrooms: 2

Parkings: 1

Type: Apartment



Ivana Robinson
0296082222

\$628,000

Designed to encapsulate an abundance of light, this oversized two bedroom, two bathroom apartment with an additional media room which can be used as a third bedroom, is set on the 14th floor of the Paper Mill building in the prime location of Greater South Western Sydney. Unmatched in the area, this apartment offers sweeping views of the city, Georges River, and surrounding suburbs of Liverpool ideal for those seeking luxury apartment living. Fitted with split system air conditioning in all rooms, block out blinds in all rooms, and retractable flyscreens throughout, this apartment will accommodate convenience for your lifestyle all year-round. A masterpiece of design, it offers architecturally crafted spaces and stylish design living all set on the 14th floor. With floor to ceiling sliding doors filling the space with natural light, this highly desirable apartment is the ideal home for first home buyers and investors looking for the ultimate in deluxe living. Features include:- Spacious open plan living and dining open to large entertainers balcony with spectacular views- Freshly painted- Hybrid floorboards installed throughout- Carpets in bedrooms- Sleek kitchen with premium cabinetry, gas cooktop, steel appliances and dishwasher- Main bedroom with ensuite and large robe- Block out blinds throughout- Additional bedroom with extensive wardrobe storage- Media room, could be used as third bedroom- 3x Split system air conditioning. 1 in main living area, master bedroom and second bedroom. -Downlights throughout- Internal laundry- Retractable flyscreen on main slider door in living area and master bedroom- Secure basement parking with large storage cage- Footsteps away from the Paper Mill dining precinct-Exclusive rooftop pool-Rooftop BBQ area - Walking distance to Liverpool Train Station, Westfields Liverpool and close distance to hospitals- Close proximity to m5 and m7 motorways Disclaimer: All information contained herein is gathered for sources we believe reliable. We have no reason to doubt its accuracy, however we cannot guarantee it. All interested parties should make and rely on their own enquiries.