

# 142 Minerva Road, Wedderburn, NSW 2560



## Sold House

Wednesday, 21 February 2024

142 Minerva Road, Wedderburn, NSW 2560

**Bedrooms: 3**

**Bathrooms: 1**

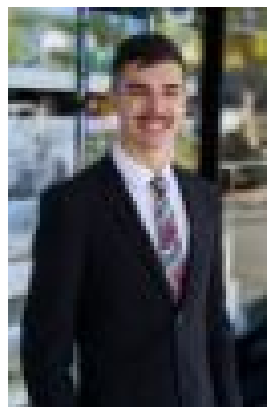
**Parkings: 4**

**Area: 2 m2**

**Type: House**



Joe Safi  
0410798219



Hayden Cortis  
0401842143

**\$1,400,000**

Escape to a rural haven with approximately 6.1 acres of blissful countryside. This property features an original fibro cottage exuding rustic charm, complemented by a detached farm shed for storage. Market Gardeners will appreciate the six greenhouse igloos, while a sizable dam ensures ample water for irrigation. The clear and level block offers a versatile canvas for your vision. Located just moments from Campbelltown and Macarthur Square, this property strikes the perfect balance between serenity and convenience. Seize the chance to own a piece of rural paradise and explore the endless possibilities this property has to offer. Disclaimer: All information contained herein is true and correct to the best of our ability however, we encourage all interested parties to carry out their own enquiries at all times and to not solely rely on the information and photos provided here within as well as discussions with agents or their representatives.