

# 142 Twin Ranges Drive, Warragul, Vic 3820

## Sold House

Wednesday, 28 February 2024



142 Twin Ranges Drive, Warragul, Vic 3820

Bedrooms: 3

Bathrooms: 2

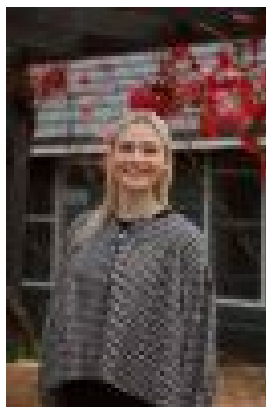
Parkings: 2

Area: 504 m2

Type: House



Anthony Rabl



Abbey Fisher  
0499004678

**\$583,000**

A fantastic home comprising of three bedrooms including a generous main with ensuite and large built in robes. The remaining two bedrooms also feature built in robes and are serviced by the main bathroom with separate toilet. The spacious open plan kitchen hosts stainless steel appliances, ample storage and bench space and overlooks the dining and living area. With sliding doors opening to the decked entertaining, the living room allows for effortless indoor-outdoor entertaining whilst welcoming an abundance of natural light. The decked entertaining area is beautifully landscaped and encourages low maintenance living on the 504m<sup>2</sup> allotment. The corner block also features gated yard access for accommodation of additional vehicles, caravans or other toys. Other features of this home include ducted heating and evaporative cooling, a study nook with built in shelving and the attractive location within Chesterfield Park Estate, boasting walking distance to St Angela's Primary School, sporting facilities and parks.