

1428 Chambers Flat Road, Chambers Flat, Qld 4133



Sold House

Wednesday, 23 August 2023

1428 Chambers Flat Road, Chambers Flat, Qld 4133

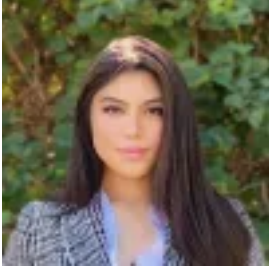
Bedrooms: 3

Bathrooms: 1

Parkings: 11

Area: 1 m2

Type: House



Serena Garcia
0730598600



Syed Ali
0730598600

\$815,000

A rare and exciting opportunity is now up for grabs at 1428 Chambers Flat Road! Representing lifestyle and opportunity together for astute buyers or savvy investors. Situated in the very popular precinct in Chambers Flat, this property is not to be missed! Set on a large 12530m² of flat land and in the most convenient location, there is truly room for everyone! This property represents the lifestyle for the whole family. When the kids grow up, they will remember this place. The seemingly endless yard and old gum trees with a tyre swing. The race down to the water to see the basking lizards and all the different water birds. The kids will remember that all the big family events, the bonfires and all the adventures. They will remember your house for everything it was; a peaceful happy place set in nature. Those with children will appreciate the expansive areas with sprawling lawns, lush gardens and tall mature trees. There's plenty of room to keep animals and grow your own food. Extra features include a rainwater tank and a private dam. It features three good-sized bedrooms, bathroom and living areas. A well-maintained lowset brick home on a very generous block size of 12530m² is not to be missed. There is an ample space for parking including carports and a huge size shed and a separate office shed which is perfect for home buyers and investors alike. Prime location, minutes from other newer developments in the area, your own private acreage with a very affordable price tag this property is not to be missed. This can be a prime parcel of land for any buyers eager to create multiple dwellings, land bank, looking for a lifestyle property and enjoy fantastic returns on their investment. Main Features: • 1.253 hectares • 3 bedrooms • 1 bathrooms • 2 large living areas • Multiple air-conditioning • Carports • Separate office shed/dwelling • Rainwater tanks • Private Dam A 10-minute drive will take you to the bustling Park Ridge Shopping Centre and Park Ridge High School and you're only 15 minutes from the heart of Beenleigh and . Easy links to the Gold Coast add incredible convenience to this must-see property and the Brisbane CBD is less than 40 minutes away by car. Location: • 3 km Kings Christian College • 8 km Marsden State School • 12 km Canterbury College • 1 km Strawberry Farm • 6 km Logan Reserve Shopping centre (Amenities) Logan City Council is improving a 3.8-kilometre section of Chambers Flat Road, from Mount Lindesay Highway (Munruben) to just north of Kings Way (Chambers Flat). The road is a vital link in the local road network and the upgrade will help deliver: - A safer, smoother and better road - Improved flood immunity. More details here: <https://www.logan.qld.gov.au/chambersflatroad> The local area of Chambers Flat is known for its peaceful ambiance and strong sense of community. Residents here enjoy the convenience of being close to essential amenities while relishing the privacy and serenity of rural living. Nearby, you'll find excellent schools catering to all educational needs, ensuring a quality education for your family. Contact Syed @04165 498 295 Or Serena @0415 844 573 To register your interest or to book a private inspection. Disclaimer: All information contained herein is gathered from sources we consider to be reliable. However we can not guarantee or give any warranty about the information provided and interested parties must solely rely on their own enquiries.