

143 Hambledon Road, Schofields, NSW 2762

House For Sale

Saturday, 9 December 2023



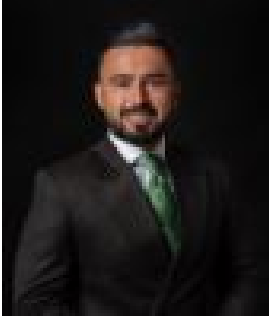
143 Hambledon Road, Schofields, NSW 2762

Bedrooms: 3

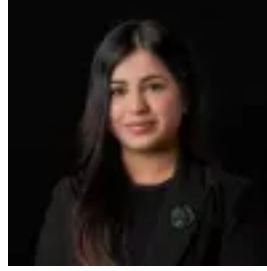
Bathrooms: 2

Parkings: 2

Type: House



Amit Kumar
0288964336



Siya Sachdeva
0288964336

Price Guide \$975,000

With a location that is second to none, step into this beautifully laid out home located in Schofields, offering a harmonious fusion of convenience and comfort for your loved ones. Within close proximity you will find local parks, public transport and local shopping centres as well as the Riverbank Public School and The Ponds High School within catchment. As you enter the home you are welcomed by the spacious open plan living/dining areas that offer tiled floors throughout and space plus comfort for everyone in the family. The effortless flow between spaces continues out to the undercover alfresco and backyard making it ideal for indoor-outdoor entertaining opportunities. The gourmet kitchen boasts an island with stone bench top, 900mm stainless steel gas oven and cooktop, breakfast bar, ample preparation space and storage. Additionally, the open-plan family/kitchen/dining area flows through sliding glass doors to the large undercover alfresco overlooking the low-maintenance landscaped surrounds. Perfect for entertaining friends and family all year round. Upstairs features three good-sized bedrooms all with built-in wardrobes, while the master offers a stylish ensuite! The bedrooms are serviced by the large family bathroom equipped with separate bath and shower. An extra study nook is strategically placed so that the kids can study in peace. Features you will love about this home:- LED lights throughout the home- Ducted air conditioning- Double glaze windows- Designated study area upstairs - Security alarm systems- Internal laundry with access to the back yard and additional WC downstairs. - Double garage with rear lane access

Location Highlights:- 5 minutes drive to Schofields Train Station and Schofields Shopping Village- An easy commute to the CBD - Walking distance to The Ponds High School & Riverbank Public School

This near new property is situated in a developing suburb that will fulfil all your hopes and dreams for your forever family home. Disclaimer: All information contained herein is obtained from property owners or third-party sources which we believe are reliable. We have no reason to doubt its accuracy, however we cannot guarantee it. All interested persons should rely on their own enquiries.