

**145 Beddington Road, Herbert, NT 0836**



**Sold House**

Monday, 14 August 2023

145 Beddington Road, Herbert, NT 0836

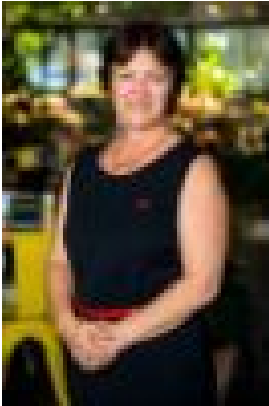
**Bedrooms: 3**

**Bathrooms: 2**

**Parkings: 2**

**Area: 2 m2**

**Type: House**



Rayna Kirikino  
0889487166



Macca Houkamau  
0417198527

**\$850,000**

If you have been contemplating of a rural escape, away from the hustle and bustle of the city, this is your opportunity to do so! This three-bedroom home offers a spacious layout suitable for a range of lifestyles and families with a large undercover entertainment area, including an outdoor kitchen with a BBQ oven. This property is perfectly designed for our local climate, one that will ensure absolute comfort all year round. There is a gorgeous in-ground swimming pool surrounded by nature providing an area for summertime indulging. Living in the country puts you closer to nature with less noise, cleaner air, more privacy, and less stress. This approximate 5-acre block located 16km from Coolalinga CBD, is ideal for anyone wanting a private lifestyle with endless opportunities. The open plan living, and dining delivers plenty of room for everyone to relax and unwind. This space offers an abundance of oversized louvred windows allowing for maximum airflow and natural light and views across the outdoor greenery. The dining area adjoins a fully equipped kitchen with ample storage and bench space, a breakfast bar, and overhead display cabinets. Flowing off the living room you will find all three bedrooms are generous in size, have split system air conditioning and ceiling fans throughout. The master bedroom has an ensuite with a walk-in wardrobe, while the additional bedrooms have built in wardrobes. All bedrooms have a sliding door access to the wrap around verandah. Main bathroom is complete with a combined enclosed bathtub and shower, separate toilet, and a single vanity. The internal laundry room includes a linen cupboard with access through to the rear of the house. A notable feature of this property is the large entertaining area with a built in Woodfired-Pizza oven, perfect for entertaining family and guests. The outdoor kitchen has Stone bench tops each with waterfall ends, 4x bar fridges to keep those drinks cool, plenty of drawer unit space for storage, electrical power points for appliances including USB points, 2x sinks and a dishwasher to ensure entertaining will be a dream. At the end of the day, you will look forward to relaxing with family and friends in the gorgeous in-ground swimming pool with two shade cloths to protect you from Darwin's hot climate. The backyard offers endless possibilities for gardening and landscaping with a water tank, established vegetable garden, dog kennel and poultry coup. Now for the shed, it is a whopper. Measuring 16m x 9m, this 3-bay, with a four-roller door access, there is 3 phase power throughout, along with 15 amp outlets making this shed perfect for any kind of workshop or for storage of your vehicles and machinery. The property is ready for you to purchase and enjoy immediately. Live a more relaxed pace of life, stress free and in an excellent location, don't let this one slip through your fingers!-- Approx. 5-acres of land-- Property has 3 phase power-- 21 Solar panels with a 4.5kw system-- All three bedrooms are generous in size and have sliding door access to the wrap around verandah-- Master bedroom with built in wardrobe, split system air conditioning and ensuite-- Additional bedrooms have built in wardrobes and split air conditioning-- Large paved outdoor entertainment area-- Gorgeous in-ground swimming pool nestled amongst the greenery-- Louvered windows throughout allowing for maximum airflow and natural light-- Split air conditioning and ceiling fans throughout-- Wrap around styled kitchen with loads of cupboard space and bench space-- Internal laundry with linen cupboard and external access to the rear of the house-- Spacious open plan living and dining area for entertaining-- Water tank-- Easy care, lush green lawn, garden beds and natural bush-- Large work shed with four roller door access for plenty of parking or machinery-- Huge undercover entertainment area with Stone benchtops and a Woodfired---- Pizza oven-- Privately nestled on a 5-acre block surrounded by nature-- Conveniently located 15mins from Coolalinga CBD