

145B Kent Street, Epping, NSW 2121



Duplex/Semi-detached For Rent

Tuesday, 30 April 2024

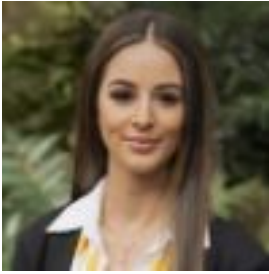
145B Kent Street, Epping, NSW 2121

Bedrooms: 4

Bathrooms: 2

Parkings: 1

Type: Duplex/Semi-detached



Chantelle Coluccio

0298763133

\$1,500 per week

This spacious quality duplex boasts flexible living areas in a convenient and highly sought after pocket of Epping. The property features four double sized bedrooms all with built in wardrobes, ensuite to main bedroom, ducted air conditioning, separate tiled lounge and dining rooms, stainless steel appliances in the kitchen, single lock up garage with automatic door, loads of storage, garden shed, fully fenced yard and easy to maintain gardens with paved BBQ area with pergola. Desirably positioned across the road from Epping Heights Public School, within walking distance to the bus stop and a short stroll to Epping Station, Coles and shops. Features:- Four large double bedrooms all with built in robes- Master with ensuite- Kitchen with stainless steel appliances overlooking backyard- Separate lounge and dining area- Entertainer's BBQ area with pergola- Fully fenced low maintenance back yard- Garden shed- Single auto lock up garage- Ducted AC- NBN connected- Walk to Epping Heights Public, buses, Epping Station and shops