

146/20 Allara Street, City, ACT 2601

ARCHER

Sold Apartment

Monday, 14 August 2023

146/20 Allara Street, City, ACT 2601

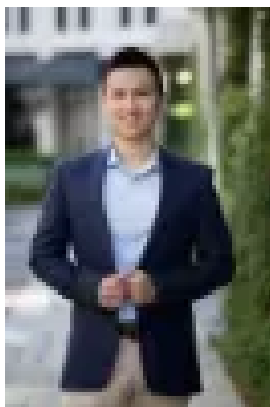
Bedrooms: 2

Bathrooms: 2

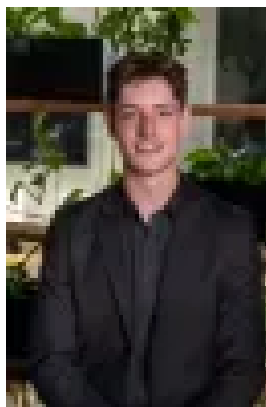
Parkings: 1

Area: 87 m2

Type: Apartment



Alex Wang
0262625232



Benjamin Bailey
0262625232

\$730,000

Welcome to the ultimate city lifestyle! Discover this stunning and spacious 2-bedroom apartment located in the prestigious Park Avenue building. Enjoy the convenience of city living with easy access to a wide range of amenities, including Canberra Centre, restaurants, cafes, shops, medical centers, public transport, and the Australian National University. Boasting an impressive North-East facing aspect, this apartment captures an abundance of natural light throughout the open plan living area. Entertain guests on the large balcony overlooking leafy Campbell mountain views or simply relax and enjoy the serenity. The generously sized bedroom features built-in wardrobes, with the master bedroom offering an ensuite and walk-in robe. The modern open-plan kitchen is equipped with high-quality appliances, ample storage and pantry space, and stone benchtop. Residents of the Park Avenue building enjoy access to a spacious foyer, podium garden with undercover BBQ area, and a fully equipped gym. Additionally, the resident lounge can be used for events, providing the ultimate in luxury and convenience. This apartment is currently leased to January 18th, 2024, making it a fantastic opportunity for those seeking a stylish city lifestyle or a great investment opportunity. Contact us for more information and book an appointment today to experience luxury living in the heart of the city center!

Features:

- Level 14 with stunning views
- North-east facing
- Floor to ceiling window and sliding door
- Ducted R/C air-conditioning
- Full height tiles in Bathroom
- Double glazed windows and sliding doors
- Walk-in wardrobe in master and built-in robe in 2nd bedroom
- European-style laundry including dryer
- Gym, resident lounge and BBQ facilities
- Secure Carpark with storage
- Centralized location next to Canberra Center

Particulars (all approx.) Living: 80 m² + Balcony: 7 m² Year Built: 2021 Strata: \$1,136/quarter Rates: \$487/quarter Current Lease: \$650/week EER: 6.0

DISCLAIMER We have obtained all information provided here from sources we believe to be reliable; however, we cannot guarantee its accuracy. Prospective purchasers are advised to carry out their own investigations and satisfy themselves of all aspects of such information including without limitation, any income, rentals, dimensions, areas, zoning and permits. Any figures and information contained in this advertisement are approximate and a guide only and should not be relied upon for financial purposes or taken as advice of any nature. Individuals, Self-Managed Super Funds, companies, anyone or entity, should make their own inquires and seek their own advice and rely only upon those inquiries and advice. Archer does not guarantee the accuracy of the information above and are not financial advisers or accountants and do not provide any of the above information as advice of any nature.