

146 Grandview Drive, Newport, NSW 2106



Sold House

Friday, 26 January 2024

146 Grandview Drive, Newport, NSW 2106

Bedrooms: 5

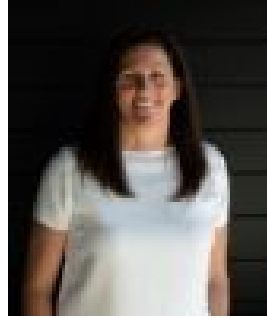
Bathrooms: 3

Parkings: 4

Type: House



Thomas Mackay
0299732999



Tina Friend
0299732999

\$1,920,000

Discover the perfect canvas for your architectural creativity with this two-story, double-brick family home, boasting a north-facing orientation that's full of character. Nestled in the serene hills of Newport/Bilgola, this property offers an affordable opportunity for families looking to lay down roots in a friendly neighbourhood and add their personal touch to create their dream home.

Key Features: Two level brick home with separate accommodation, gas fireplace
Expansive 885 sqm site (approx.) with driveway access from Daly Street
Five bedrooms, 2 bathrooms, 2 car lock up garage and additional off street parking
Wrap around sunny balconies overlooking lush greenery

Renovate and personalize (STCA): This is your chance to add value and infuse the home with your unique style

Sun Drenched living: enjoy an aspect that bathes the home in sunlight throughout the day, enhancing the warmth and ambience of the living spaces.

Dual Living Potential: The layout presents the possibility for self-contained living arrangements, offering flexibility for growing or multi-generational families.

Convenient Location: Experience the convenience of an easy walk (260m) to local amenities, including IGA, cafes, schools, veterinary, a bottle shop, and public transportation. This is more than just a house, it's a potential-filled home that's waiting for a visionary to unlock its full potential, seize the opportunity to make your mark on this gem in a sought-after location.