

**146 Seaview Road, Henley Beach South, SA 5022**



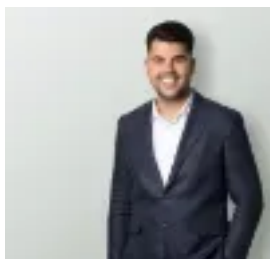
**Residential Land For Sale**

Wednesday, 15 May 2024

**146 Seaview Road, Henley Beach South, SA 5022**

**Area: 603 m2**

**Type: Residential Land**



Jae Curtis  
0402694012



Jayden Lugg  
0435137911

## Contact Agent

This exceptional coastal land offering represents a unique and increasingly rare opportunity for those aspiring to construct their dream home on a generous allotment size. Whether you're envisioning a bespoke single-family residence or a sophisticated development of executive homes, this property provides the blank canvas on which to realize those aspirations. The potential here is unmistakable, affording one the possibility of creating a stunning abode tailored to the high-end coastal lifestyle that is so highly coveted. With prospects to attain panoramic views that stretch from the bustling cityscape to the tranquil sea, this site is truly a gateway to architectural and residential excellence. Spanning approximately 603sqm, the property comes with current plans for the creation of an opulent three-storey dwelling, encompassing over 677.5sqm of luxurious living space (STCC). The proposed structure is designed to maximize the unique attributes of coastal living, blending modern design with unparalleled location to deliver a residence of distinction. Situated at 146 Seaview Road in the serene Henley Beach South, this allotment is poised to offer its new owners the perfect marriage of peaceful residential living and easy access to urban amenities.

**Key Features:-** Substantial land opportunity of around 603sqm in a sought-after coastal locale- Proposed plans available for a luxurious three-storey dwelling, spanning over 677.5sqm (STCC)- Potential for sweeping views from the city to the sea, enhancing the living experience- Prime location, reflecting the quintessence of a blue-chip investment or personal residence- Ideal proximity to Henley Beach, allowing for immersive coastal experiences just steps away- 3-minute walk to Henley Beach Primary School- 2-minute car ride, or brisk stroll to Henley High School- 350m to the River Torrens Linear Park Trail / Breakout Creek Wetlands- Excellent location for public transport and local dining at Henley Square- Access to shopping amenities nearby, adding convenience to a premium lifestyle

This allotment presents a rare chance for both personal homebuilders and astute developers to create something truly special in a prime location, synonymous with luxury and exclusivity. With its ideal positioning near top-notch amenities and the golden sands of one of Adelaide's most beloved beaches, this is an unprecedented opportunity to forge a dream living space or investment in a sublime beachside suburb. Act now to seize this unparalleled beginning to a lavish coastal narrative. All information provided has been obtained from sources we believe to be accurate; however, we cannot guarantee the information is accurate, and we accept no liability for any errors or omissions (including but not limited to a property's land size, floor plans and size, building age and condition). Interested parties should make their own inquiries and obtain their own legal advice. RLA 329240.