

# 147 Greythorn Road, Balwyn North, Vic 3104



## Sold House

Friday, 3 November 2023

147 Greythorn Road, Balwyn North, Vic 3104

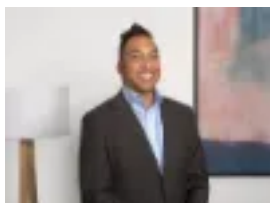
Bedrooms: 4

Bathrooms: 3

Parkings: 2

Area: 448 m2

Type: House



Reuben Nadarajah  
0398723995



Alvin Lam  
0398723995

## Contact agent

Custom designed with an eye for detail, a commitment to quality and an emphasis on modern practicality, this 3-year-young standalone residence delivers sophisticated lifestyle living in a premier location. Cuddling a landscaped corner allotment, the home boasts the benefit of beautiful garden and treed aspects through most of its double-glazed windows. Inside, 2.7-metre-tall ceilings, warm hybrid timber floors and soft carpet highlight the home's 34 square double storey floorplan. Strategically-placed bulkheads, a gas log heater and a Velux skylight add dimension and function to the light-filled living and dining room, which is crowned by a showpiece kitchen with premium appliances, soft-close cabinetry, stone-wrapped benches and a breakfast island. Slide the stacker doors aside and the transition to outside is effortless, where you'll find a covered/lit alfresco deck with a Velux skylight, nestled amidst an ultra-private garden. A luxe master suite with a walk-in wardrobe and a chic ensuite complement the ground floor of the home, accompanied by a powder room, a study and a laundry with generous storage. Upstairs, you're greeted by a bright, open retreat with a door to a tree-canopied balcony. Three further bedrooms with built-in wardrobes reside up here. This includes a second master suite with a walk-through wardrobe into an ensuite, plus a bedroom that boasts ensuite-effect access into the home's main bathroom, complete with an indulgent freestanding bathtub. Enriched with excellent inclusions, this refined residence features ducted heating, refrigerated air conditioning, block-out blinds with privacy screens, a camera intercom, alarm system, CCTV, a 2,000-litre greywater tank with a pump, liberal storage and a remote double garage with internal access. Its convenient position is close to Melbourne's private school district. Located within walking distance to Greythorn and Belmore Road shops, bus and tram stops, Greythorn Primary School, Box Hill Senior Secondary College, Balwyn East Kindergarten, childcare centres and parks. Only a short commute to Koonung Secondary College, Balwyn Village, Westfield Doncaster and the Eastern freeway.