

# 149 Meadowlands Road, Carindale, Qld 4152

## House For Sale

Wednesday, 17 January 2024



149 Meadowlands Road, Carindale, Qld 4152

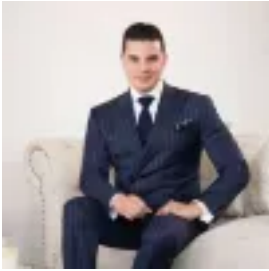
**Bedrooms: 5**

**Bathrooms: 2**

**Parkings: 3**

**Area: 702 m2**

**Type: House**



Will Torres  
0738432938



Doug Akenson  
0439696818

## For Sale

Welcome to your dream home! Nestled in an enviable location directly across from the picturesque Minnippi Parklands, this exquisite residence boasts a lifestyle location and a spacious single-level design, creating the perfect haven for seamless family living. A scenic escape designed across 353sqm, the house showcases stunning cathedral ceilings reaching 4.28m, inviting exquisite light, warmth, and a welcoming feel. Comprising a collection of living spaces, families will love the separation and endless room to host guests. The flowing floor plan moves effortlessly across the formal dining room, lounge, informal dining room, and family room, featuring a skylight and access outdoors. The central kitchen has been redesigned to ensure comfort and functionality when cooking and entertaining. An Amani oven, Asko dishwasher, and IAG cooktop make meal preparation easy, and the extended benchtop features a servery to the alfresco entertaining zone. A sanctuary outdoors, the alfresco area captures lush green views across the backyard and gardens. With lots of room for kids to play and an undercover 11-person spa, perfect for unwinding after a long day, you can soak in the serenity all year round. Six bedrooms (or five bedrooms and a study) span the home. The master suite opens to a private deck and boasts a walk-in robe, ensuite and roller blinds. A second bathroom, a separate powder room and laundry service the rest of the house. Additional features:- Remote double garage with drive-through side access- Two carports, including one behind the garage- Ample cabinetry and storage throughout - Brand new carpet in the living room, study and master bedroom- Zoned ducted air-conditioning and ceiling fans- 5,000L water tank and 2x garden sheds Presenting a picture-perfect parkside position, families can access the ultimate backyard right across the street. You can enjoy the parkrun every weekend, visit the dog park and take kids to the playground. Westfield Carindale is just 2km away, and the CBD is 20 minutes from your door. An easy walk to bus stops and childcare and moments from top schools, you will love the location. Disclaimer: Whilst every care is taken in the preparation of the information contained in this marketing, Torres Property will not be held liable for any errors in typing or information. All interested parties should rely upon their own enquiries in order to determine whether or not this information is in fact accurate.