

14B Bessie Street, Bentleigh East, Vic 3165

Townhouse For Rent

Monday, 4 September 2023

14B Bessie Street, Bentleigh East, Vic 3165

Bedrooms: 4

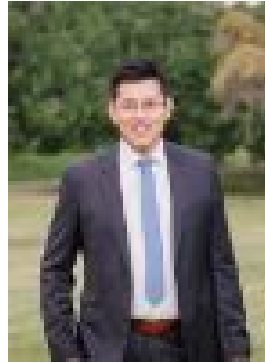
Bathrooms: 3

Parkings: 2

Type: Townhouse



Kelly Yang
0491647798



Kevin Fan

\$2,500 per week

Introducing a brand new and truly unique rental opportunity in a prized locale just moments from Kew Junction. Designed by Embrace Architects and adorned with superbly landscaped gardens by the renowned Jack Merlo, this ground floor residence stands as a beacon of contemporary excellence. Crafted as one of only five within the striking 'WHARTON' development, this rental property sets new standards of modern sophistication. Every detail exudes luxury, from the high-end finishes to the oak parquet floors and grand open spaces drenched in natural light. This north-facing haven boasts seamless indoor/outdoor integration, offering three alfresco entertaining areas that beckon for gatherings under the sun. At its heart lies a sprawling, 5m long G-Lux marble island kitchen, equipped with top-of-the-line V-Zug & Liebherr appliances and abundant storage. Step into a world of versatility with multiple living zones, including a secondary sitting room and a serene home office area, which could easily serve as a fourth bedroom. Lavish accommodation awaits with three bedrooms featuring built-in robes, while the primary suite indulges with its own dressing room and a marble ensuite of opulent proportions. Elevating your living experience are modern conveniences such as zoned heating/cooling, designer fittings, video intercom, and a fingerprint entry system. Not to mention the ease of lift access to basement parking for two cars and a storage cage. Seize the opportunity to be the first to call this unparalleled residence home. Enviably located within walking distance of trams, cafes, shops, and esteemed schools, this brand new rental offering is a rare find in a coveted neighborhood.