

15/1 Carlisle Close, Macquarie Park, NSW 2113



Sold Unit

Thursday, 21 September 2023

15/1 Carlisle Close, Macquarie Park, NSW 2113

Bedrooms: 2

Bathrooms: 1

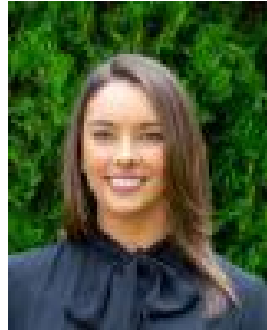
Parkings: 1

Area: 99 m2

Type: Unit



Allison Mifsud
0405138408



Danielle Jenkins
0459341200

\$705,000

Enjoy soaking up the northerly sun with a tranquil, private, and leafy outlook. Offering a split-level design with spacious interiors and convenient to Macquarie rail, Shopping Centre, Bus and Business Park.* Two large bedrooms, main with built in robe* Lounge/dining room leads to the entertaining balcony* Bright white kitchen adjoins internal laundry* Neat bathroom with separate bath and shower* Single covered car space with extra height + storage* Inground swimming pool in the complex* Convenient to Bus, Rail and MetroSize: Total 99sqm (Int 83sqm, Car 16sqm)Rates: Strata: \$1125 pqCouncil: \$342 pqWater: \$174 pq