

**15/129 Hoddle Street, Richmond, Vic 3121**



**Apartment For Sale**

Wednesday, 12 June 2024

15/129 Hoddle Street, Richmond, Vic 3121

**Bedrooms: 4**

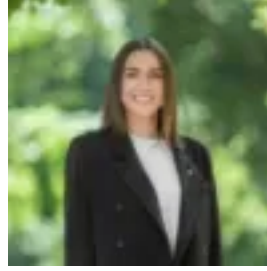
**Bathrooms: 3**

**Parkings: 4**

**Type: Apartment**



Luke Schickerling  
0394283333



Sarah Sherlock  
0394283333

## Contact Agent

Configured to frame its spectacular sights, this remarkable residence, spread across two superb storeys, offers an aspirational penthouse lifestyle on Richmond's revered East Melbourne border. Featuring full height windows, vaulted ceilings, and an open atrium, two substantial living areas enjoy a sense of space, calm, and depth, stepping into expansive eastern and western terraces with collective panorama spanning treetops, mountains, and Melbourne's inspiring skyline. With a wet bar to skylit sitting room and upscale appliances to an entertainer's kitchen, quiet lower office and upper study areas heighten appeal for professionals, while lavish main and guest ensuites, walk in and built in robes, and a central bathroom with spa service three considerable bedrooms. Further highlights include zoned heating/cooling, four garage spaces, ducted vacuum, security access, a video intercom, gas fire to living, mains gas barbecue to eastern terrace, lower storeroom, and combined powder room/laundry with chute. Placed by West Richmond Station, numerous trams, and acres of lush gardens, it's metres from Yarra Park, the MCG, and restaurants, cafés, and boutiques of iconic Bridge Road.