

# 15/144-148 High Street, Penrith, NSW 2750

## Apartment For Sale

Thursday, 14 March 2024

15/144-148 High Street, Penrith, NSW 2750

Bedrooms: 2

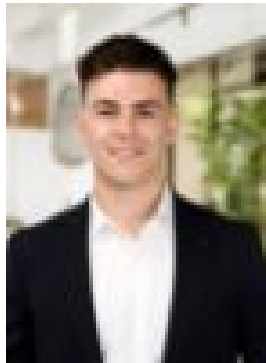
Bathrooms: 2

Parkings: 1

Type: Apartment



Jeremy Moss  
0247323711



Ryan Hatch  
0448735445

**\$539,000 - \$569,000**

IMMACULATE UNIT IN HEART OF PENRITH Unit 15 is nestled within the pristine Home on High complex, built by one of Western Sydney's leading builders, Astina Group. Boasting a spacious open plan and light filled layout with high quality features and finishes, plus an abundance of storage throughout. This near new, two bedroom unit is only walking distance to Penrith CBD and the Nepean Hospital Precinct, making this perfect for First Home Buyers, Downsizers, and Investors looking to invest within close proximity to everything Penrith has to offer. Currently leased with a great rental return! Further features include:

- 2 oversized bedrooms with carpet and large built-in mirrored wardrobes to both
- Study nook and ensuite to master bedroom
- Spacious kitchen featuring quality stone bench tops, gas cooking and breakfast bar
- Open plan living and dining with tiled flooring throughout plus split system air conditioning
- Combine main bathroom
- European style laundry
- Spacious balcony off living area with access from second bedroom
- Plenty of storage space throughout home
- Secure underground parking space plus storage cage
- Intercom system
- Built in 2018 by Astina Group

Located within walking distance to Penrith CBD, Nepean Hospital, local schools, shops and public transport Location, Location, Location! Nearest Bus Stop - 50m Nepean Hospital - 250m Penrith Selective High School - 350m St Dominic's College - 600m Penrith CBD - 700m Kingswood Train Station - 1km Penrith Train Station - 1.5km Western Sydney University - 3kms

Disclaimer: We have been furnished with the above information however, PRD Penrith & PRD Blue Mountains gives no guarantees, undertakings or warnings concerning the accuracy, completeness or up-to-date nature of the information provided. All interested parties are responsible for their own independent enquiries in order to determine whether or not this information is in fact accurate.