

15/33-39 Belmont Road, Tingalpa, Qld 4173

Sold Townhouse

Tuesday, 9 January 2024



15/33-39 Belmont Road, Tingalpa, Qld 4173

Bedrooms: 4

Bathrooms: 2

Parkings: 2

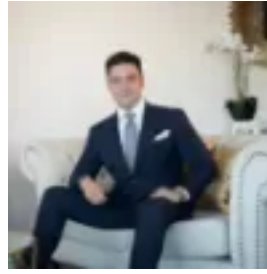
Area: 192 m2

Type: Townhouse



Li Tao

0738432938



Alex Ryan

0738432938

Contact agent

Large-scale living and a community lifestyle await in this beautiful townhouse in Tingalpa's boutique 'Evolv Residences'. Less than 5 years old and peacefully positioned in a private complex of 18, the property presents a spectacular location and layout featuring four bedrooms and a double garage. With no compromise on space, style and liveability, buyers will love the configuration and thoughtful design, inviting abundant natural light and breezes. Adorned with an elegant neutral palette enriched with new plantation shutters, gorgeous flooring, plush carpet, and air-conditioning, the floor plan lends itself to relaxed comfort. The living and dining area downstairs creates an open and airy feel with 2.6m ceilings, air-conditioning, and a design surrounding the sensational kitchen with excellent storage, soft-close drawers, 20mm stone benchtops and Bosch appliances. When you want to bask in the breezes and share meals outdoors, you can step out to the private alfresco patio, boasting high fences and low-maintenance greenery. Four carpeted bedrooms feature upstairs, including three with built-in robes and one with a walk-in robe. The light-filled master suite adds a touch of luxury with a dual vanity ensuite and air-conditioning. A second bathroom with a bathtub services the additional bedrooms, and a powder room and separate laundry are downstairs. Additional features:- Air-conditioning in the living area and two bedrooms- Ceiling fans inside and on the alfresco patio- Security screens on windows and doors- New isolation on the roof- 250L hot water system- Outdoor clothesline Offering lifestyle appeal, this townhouse is in an excellent location just 20 minutes from the CBD and 12 minutes from the Wynnum/Manly foreshore. You can stroll 300m to the Tingalpa Hotel, walk 850m to the Belmont Road Shopping Village, and drive 7 minutes to Westfield Carindale. With bus stops right outside, Tingalpa State School 400m away, private schools nearby, and Kianawah Park around the corner, a superb lifestyle awaits. Disclaimer: Whilst every care is taken in the preparation of the information contained in this marketing, Torres Property will not be held liable for any errors in typing or information. All interested parties should rely upon their own enquiries in order to determine whether or not this information is in fact accurate.