

15/411 Anzac Highway, Camden Park, SA 5038



Apartment For Sale

Monday, 4 March 2024

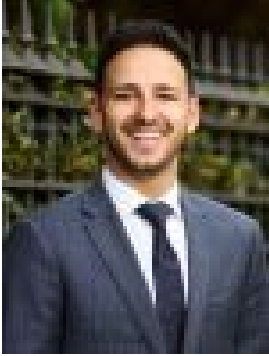
15/411 Anzac Highway, Camden Park, SA 5038

Bedrooms: 2

Bathrooms: 2

Parkings: 1

Type: Apartment



Stefan Siciliano
0403171489



Adam Humzy
0488586552

Best Offers By Monday 25th March at 10:00AM

A stylish apartment that offers a low maintenance & lock up lifestyle, located between the coast and the city you will have the best of both worlds living in this ideal area of Camden Park. This apartment offers 2 Bedrooms, 2 Bathrooms & 1 car parking space. Part of a carefully considered project including 15 town homes and the refurbishment of the Creslin Terrace Bikeway, Clifton Park apartments offer an opportunity to secure a low maintenance lifestyle in one of Adelaide's most sought after and growing suburbs. Blissfully located on the level three, unincumbered by the hustle and bustle of Anzac Highway. Features include:

- Master with walk in robes & ensuite
- Bedroom 2 also offers built in robes
- Open plan kitchen, dining & living area with sliding doors to the balcony overlooking leafy Camden Park
- Kitchen with SMEG stainless steel appliances inc. electric cook top, oven, dishwasher, stone bench tops & ample cupboard space plus water inlet for fridge water dispenser
- Family bathroom with stone benchtops, shower, toilet & vanity
- Lockable storage room located on apartment level next to lifts
- European laundry
- Secure access with fob key entry with direct access to your apartment
- Privacy screens to all windows
- Intercom system
- Undercover parking for 1 car adjacent to the lifts
- Enjoy easy access to bike paths leading directly into the city & Glenelg

The ultimate in beach and urban living, with convenient tram and bus access to the Bay and Adelaide CBD only a short walk from your doorstep. Surrounded by excellent schools and childcare, public tennis courts, gyms, and parks makes Clifton Park the perfect long term investment or place to settle in. Nearby zoned schools include: Plympton International College, Plympton Primary & Forbes Primary. Also, with several local schools nearby, Immanuel College, Immanuel Primary School & Our Lady of Grace School. Disclaimer: As much as we aimed to have all details represented within this advertisement be true and correct, it is the buyer/purchaser's responsibility to complete the correct due diligence while viewing and purchasing the property throughout the active campaign.