

15/43 Latham Street, Werribee, Vic 3030



Sold House

Saturday, 24 February 2024

15/43 Latham Street, Werribee, Vic 3030

Bedrooms: 2

Bathrooms: 2

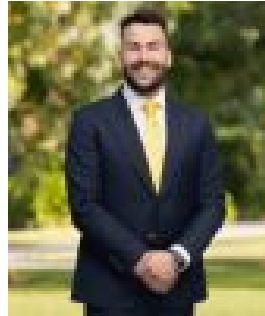
Parkings: 2

Area: 128 m2

Type: House



John Camilleri
0414778940



Petar Krnjeta
0406912320

\$415,000

Some just have your boxes ticked from the outset. John Camilleri and Ray White proudly present this beautifully crafted townhouse, set within a private complex that is just jam packed with the most generous of lists. Comprising two bedrooms with the master containing its own ensuite, the well-lit plan further highlighted by raised ceilings also entails a separate living room while the hostess kitchen boasts stainless appliances, generous cabinetry overlooking the adjoining meals room and all with direct backyard views! Ducted heating and split system air conditioning keep the internal climate as desired. Outdoors is all low maintenance and practicality within the private yard with landscaped gardens while out the front, embrace the security of the automated access lockup garage with additional storage and internal access straight into the home. Situated within a short walk to Werribee River and its gorgeous walking tracks teeming with wildlife. Riverbend Historical Park and the dog run park are also close by, while nearby amenities also entail Westgrove Primary School, Pacific Werribee Shopping Centre, Presidents Park, Eagle Stadium and the Werribee CBD with all its eateries, caf  s, services and retails options. Simply move and get on getting on with everything done.