

15/5-7 Lachlan Street, Warwick Farm, NSW 2170

CENTURY 21

Sold Unit

Thursday, 16 November 2023

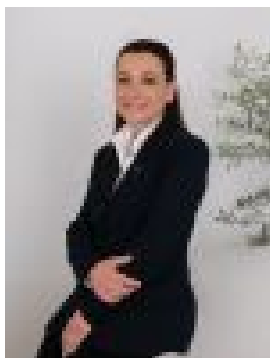
15/5-7 Lachlan Street, Warwick Farm, NSW 2170

Bedrooms: 2

Bathrooms: 1

Parkings: 1

Type: Unit



Sonia Poulos
0296015944

\$325,000

Posing as the perfect entry level or low maintenance investment this charming apartment offers sun filled living, privacy and convenience. walking distance to train station, Hospital Schools and a variety of lifestyle options* 2 good size bedrooms* Spacious lounge and dining area* Neat and tidy kitchen & Bathroom* North facing balcony* Lock up garage * Internal Laundry* Security block, Total area 74m2 * 2nd Floor position* Currently returning \$330.00 per week - Lease expiry 15/03/2024DISCLAIMER: While Century21 Combined Liverpool has made every effort in preparing this information and used their best endeavours to ensure that the information contained is true and accurate, we accept no responsibility and disclaim all liability in respect of any errors, inaccuracies or misstatements contained herein. Century21 Combined Liverpool encourages and advises all prospective purchasers to make their own inquiries in order to verify the information contained herein.