

15/56 Harbour Street, Mosman, NSW 2088

Apartment For Sale

Friday, 10 May 2024



15/56 Harbour Street, Mosman, NSW 2088

Bedrooms: 2

Bathrooms: 2

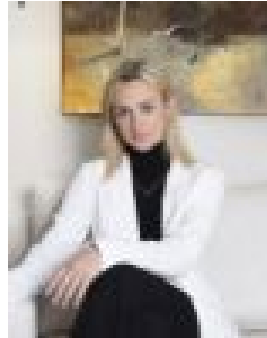
Parkings: 1

Area: 92 m2

Type: Apartment



Kirsty Freyer
0411662533



Briahna Forder
0402211083

Auction

Auction Location: Onsite Offering an enviable cosmopolitan lifestyle in the heart of Mosman Village, this rejuvenated two-level apartment embraces a delightful northern aspect and combines open interiors with smart modern finishes. It has dual access onto a relaxed all-weather balcony with an elevated leafy backdrop. Other notable inclusions consist of stainless steel Smeg gas appliances and granite bench tops in the kitchen, and two good sized bedrooms, each fitted with built-in wardrobes. Situated on the top floor within a solid boutique building, the property is located within a stroll of express city transport and specialty shopping, surrounded by Mosman's vibrant café culture. Offering an enviable cosmopolitan lifestyle in the heart of Mosman Village, this rejuvenated dual level apartment embraces a delightful northern aspect and combines open interiors with smart modern finishes. It has dual access onto a relaxed all-weather balcony accompanied by an elevated leafy backdrop. Other notable inclusions consist of the kitchen equipped with stainless steel Smeg gas appliances and granite benchtops, and two good sized bedrooms each fitted with built-in wardrobes. Utilising the top floor within a solid boutique building, the property is located within a stroll of express city transport and boutique shopping, with Mosman's café culture surrounding.

- High ceilings enhance the generously proportioned living/dining area
- Shower bathroom, guest w/c and a master bedroom with a bath ensuite
- Readymade investment opportunity attracting high rental returns
- Perfectly suited to a range of buyers seeking easy city commute
- Single basement car space with lift access
- Ducted air conditioning, secure intercom, internal storage space
- Third level, corner apartment placed within a security building
- Near a choice of premier schools, scenic parklands and supermarkets