

15/9-13 Goulburn Street, Warwick Farm, NSW 2170



Apartment For Rent

Thursday, 5 October 2023

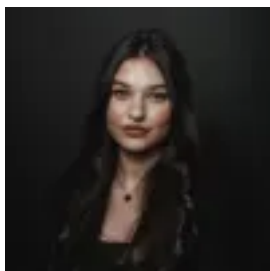
15/9-13 Goulburn Street, Warwick Farm, NSW 2170

Bedrooms: 1

Bathrooms: 1

Parkings: 1

Type: Apartment



Elyssa Dabboussi

0296474303

\$530 per week

We invite you to inspect our new rental listing. Property features: -Elegant residence featuring an open-plan living and dining area. -Queen-sized bedroom with a built-in robe that opens onto a balcony. -Well-sized kitchen equipped with European gas appliances and ample storage. -Includes a study room, tiled flooring, and split system air conditioning. -One secure car space and a storage cage in the basement. Property facts: -Preferred lease term: Minimum 6+ months -Pets allowed: No -Storage available: Yes -Parking available: Yes Building and location: -Liverpool Station -Liverpool Public School -Westfield Liverpool For further details or to arrange an inspection, please contact Chidiac representative directly. Please ensure you register for upcoming inspections to receive notifications of any inspection changes or cancellations, as well as new listings. Prospective tenants should make their own independent enquiries, including those related to utility and internet service providers as some may have limited availability, and additional connection fees may apply. The information contained within this advertisement is for illustrative/marketing purposes only and does not form part of the lease agreement and should be used as a guide only.