

15/91 Great Western Highway, Parramatta, NSW 2150

CENTURY 21.
Pinnacle

Unit For Sale

Wednesday, 17 April 2024

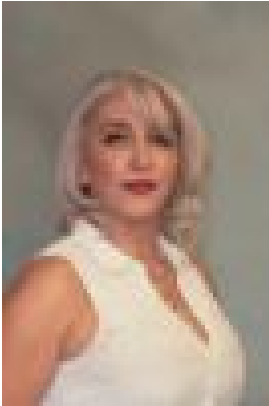
15/91 Great Western Highway, Parramatta, NSW 2150

Bedrooms: 2

Bathrooms: 1

Parkings: 1

Type: Unit



Aida Toroman
0432188827



Graham Sparks
0421121785

P.O.A

"Discover the perfect blend of convenience and comfort in this impeccably positioned unit boasting two generously sized bedrooms. Flooded with natural light, this top-floor gem is ideal for both first home buyers and investors alike, this unit features a neat kitchen with ample cupboard space, complemented by a large, bright, and airy family room. The versatile floorplan enhances the sense of space and offers flexibility to suit your lifestyle. With all amenities within walking distance, including buses, this central location offers the epitome of suburban living. Plus, rest easy with the convenience of an undercover car space. Levies Per Quarter Approx;- Strata \$664.85- Council \$316.20- Water \$178.42