

15 Blackbird Circuit, Lara, Vic 3212



Sold House

Friday, 1 September 2023

15 Blackbird Circuit, Lara, Vic 3212

Bedrooms: 3

Bathrooms: 1

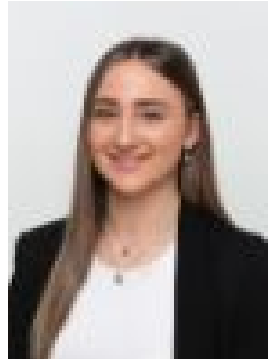
Parkings: 2

Area: 450 m2

Type: House



Chari Emirzade
0452341778



Chanelle Morrison
0429221913

\$627,000

Nestled in the charming town of Lara, this inviting home is a true gem that combines comfort, style & functionality. Boasting an array of features designed to enhance modern living, this residence offers the perfect setting for families or anyone seeking a peaceful retreat within easy reach of amenities. The first thing that catches the eye is the home's stunning curb appeal. The well-maintained exterior, adorned with lush greenery & a neatly manicured lawn, welcomes you with warmth. Step inside, & you'll be greeted by a spacious living room/parents' retreat perfect for sitting back & relaxing. Adjacent is the light filled Master bedroom offering plenty of space, his & her BIRs & access to the updated two way bathroom. The heart of this home lies in its modernised kitchen, which has been thoughtfully renovated to meet the needs of today's culinary enthusiasts. Offering quality appliances, plenty of bench space & ample storage. The kitchen is not only aesthetically pleasing but also highly functional. Cooking family meals or experimenting with new recipes becomes an enjoyable experience. The second living space is perfect for all the family to sit back, relax & enjoy each other's company whilst still having an additional lounge, which will be sure to make everyone in the family happy. The remainder of the home offers two spacious bedrooms, both accommodating BIRs, all serviced by a central two way bathroom, separate toilet & laundry. The interior flows seamlessly into the outdoor living space, where the perfect alfresco area awaits. Imagine spending leisurely evenings with family & friends, enjoying the fresh air & tranquility of the outdoors. The alfresco area is an extension of the home that seamlessly combines indoor & outdoor living. Situated on 450m² (approx.) with plenty of space & grass for kids & pets alike to roam around freely and includes a garden shed & a single car garage for secure parking or an additional storage solution with drive through access to the back yard. This home truly leaves you with nothing to do but simply move in. Conveniently located close to many amenities such as Lara Lake Primary School, Lara Aquatic Centre, Lara Shopping Centre, medical facilities & Lara train station. Easy access to the Geelong Ring Road, just 45 minutes from Melbourne CBD & 15 minutes from Geelong, makes this perfect for commuting.