

# 15 Cliveden Court, Templestowe, Vic 3106

## House For Sale

Thursday, 28 March 2024



15 Cliveden Court, Templestowe, Vic 3106

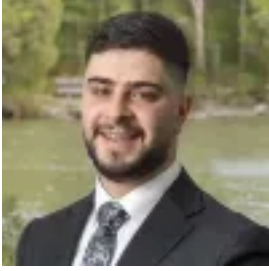
**Bedrooms: 4**

**Bathrooms: 2**

**Parkings: 8**

**Area: 5800 m2**

**Type: House**



Michael Ganavas  
0388450888



Kahlen Chen  
0388450888

**SALE \$2,100,000 - \$2,300,000**

Welcome to 15 Cliveden Court, Templestowe, where luxury living is redefined in this exquisite 4-bedroom, 2-bathroom residence. Set in a prestigious locale, this home offers a blend of formal elegance and casual comfort, complete with an in-ground swimming pool and sprawling garden space, embodying the ultimate entertainer's dream. Step inside to discover a formal lounge and a casual lounge, each designed for relaxation and hosting with ease. The alfresco area, featuring floor-to-ceiling windows, promises memorable outdoor dining experiences. The formal dining area, adorned with a fireplace, sets the scene for sophisticated entertaining. The heart of the home, a modern kitchen, is equipped with two ovens, a gas stove, dishwasher, and modern appliances, ready to cater to any culinary endeavour. A separate study room provides a quiet retreat for work or study. Upstairs, the master bedroom serves as a private sanctuary with an ensuite and balcony access, offering serene views and a perfect spot for morning coffee. The additional large bedrooms with their built-in robes ensure ample space for family and guests alike. Outside, the in-ground swimming pool, complete with a water feature and covered seating area, invites leisurely days spent in the sun. The attached unused block of land presents a blank canvas for gardening enthusiasts or future expansion. Completing this impressive home are 3 garages, including a double garage, plus a workshop, and a laundry room with outdoor access, ensuring convenience and functionality. Enhancing its appeal, 15 Cliveden Court is situated within close proximity to The Pines Shopping Centre, Templestowe Park Primary School, Eltham Primary School, and Serpell Primary School, offering unparalleled convenience and access to top-tier amenities and education.