

15 Dukas Drive, Ingle Farm, SA 5098



House For Sale

Tuesday, 28 May 2024

15 Dukas Drive, Ingle Farm, SA 5098

Bedrooms: 3

Bathrooms: 1

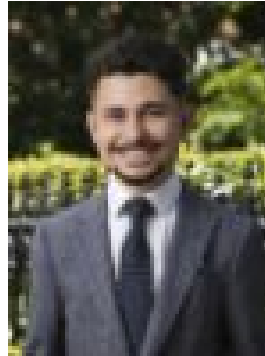
Parkings: 1

Area: 625 m2

Type: House



Vince Tropepe
0402112777



John Eglezos
0413835213

Auction On-Site Friday 14th June 5PM

Presenting a prime parcel of potential in the heart of Ingle Farm, this solid brick, single-storey home sits upon a spacious 625sqm (approx.) allotment ripe for the visionary. With an expansive frontage and the promise of abundant land, this property beckons those ready to harness its enormous development prospective, whether through a complete renovation transformation or an astute subdivision venture. The home itself is a testament to sturdy mid-century construction, featuring three comfortably carpeted bedrooms arranged in a layout that speaks to both family living and investment opportunities. The living room, anchored by a gas heater, offers a cozy space for evenings spent in. Simplicity is defined the conjoined kitchen and dining area, equipped with a Chef freestanding oven and stovetop, embraced by wooden laminate benchtops. The main bathroom, housing both a shower and bathtub, is suitably separate from the toilet, which is strategically positioned adjacent for ease of access. At the back of the house, a private laundry room with direct access to the exterior underscores the home's practical design, perfectly positioned for household chores and outdoor tasks. Step outside to discover an expansive veranda that gently wraps around the home, offering a shaded space for enjoy the outdoors. Beyond lies a substantial astro turfed area, fully fenced and ready to create future landscaping dreams. The front of the home boasts a generous driveway leading to a single car carport complete with a mechanic's pit-an intriguing feature for car enthusiasts or a unique selling point for redevelopment. The driveway continues, providing drive through access to a single car garage at the rear, adding further value to the property's versatility. While the home's interiors hold charm, the true essence of this property lies in its land-a canvas awaiting transformation. This is an opportunity not to be understated: a chance to craft a new legacy in Ingle Farm, whether by breathing new life into the existing dwelling or by seizing the potential to subdivide and create anew (STPC). For the developer, builder, or renovator, this offering is a siren call to realise a vision in a suburb known for its community spirit and growth. Additional Features: • Prime 625sqm Ingle Farm parcel ripe for development (STCC) • Solid brick home with mid-century charm • Three carpeted bedrooms, cozy living room with gas heater • Conjoined kitchen/dining area, main bathroom with shower and bathtub • Expansive veranda, astro turfed area, generous driveway with carport and mechanic's pit, garage with drive-through access • Nearby schools include: Para Vista Primary School, Good Shepherd Lutheran School, East Para Primary School, Prescott Primary, Ingle Farm East Primary, Valley View Secondary School, St Paul's College, Pinnacle College, The Heights School, Modbury High School Disclaimer: As much as we aimed to have all details represented within this advertisement be true and correct, it is the buyer/purchaser's responsibility to complete the correct due diligence while viewing and purchasing the property throughout the active campaign. PLEASE NOTE: This property is being auctioned with no price in line with current real estate legislation. Should you be interested, we can provide you with a list of recent local sales to help you with your market and value research.