

15 Glenair Street, Templestowe Lower, Vic 3107



Sold House

Wednesday, 27 December 2023

15 Glenair Street, Templestowe Lower, Vic 3107

Bedrooms: 4

Bathrooms: 2

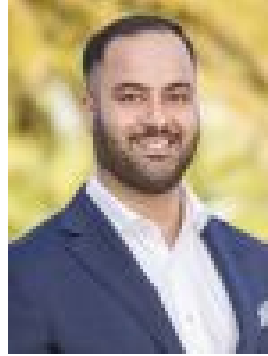
Parkings: 2

Area: 767 m2

Type: House



Scott George
0398428888



Ryan Faridi
0425440505

\$1,505,000

Traditional space blends seamlessly with classy contemporary finishes in this resort-style property that positions itself as a perfectly private haven for families of all ages and stages. Inside a brilliant layout combines a semi-formal lounge and dining area with a light-filled family and meals space all of which is separated by a stunning central kitchen. Incorporating an integrated cook top, stainless steel appliances, waterfall finished stone benches and an abundance of soft-close storage, the kitchen is a real highlight. Bedroom accommodation is housed away from the main living zones, 3 have built-in robes, the 4th could double as a home office, and the magnificent master includes a walk-in robe plus en-suite with twin vanity and corner spa. Like something straight out of a magazine, the main bathroom mirrors the exquisite finishes enjoyed in the kitchen, featuring a floating stone topped vanity, oversized semi-frameless shower and sleek floor-to-ceiling tiles. Step outside to a serene sanctuary where a large covered alfresco entertaining area has a beautiful bi-fold window through to the kitchen, connection to additional outdoor seating areas and access to the shimmering in-ground pool which is encompassed by flourishing tropical gardens. Centrally controlled heating, split-system air-conditioning, a double carport and the magnificent sized single car garage garden shed are just some of the inclusions in a quality family package. Within walking distance to Templestowe College, Templestowe Heights and St Kevin's primary schools, close to the Templestowe Shopping Village and the Macedon Plaza Shopping Centre, with great connection to Westerfolds Park, Westfield Doncaster Shoppingtown, Manningham Rd, Williamsons Rd, Doncaster Rd and the Melbourne CBD via the Eastern Freeway.