

15 Harvey Crescent, Evanston South, SA 5116



Sold House

Wednesday, 17 April 2024

15 Harvey Crescent, Evanston South, SA 5116

Bedrooms: 4

Bathrooms: 2

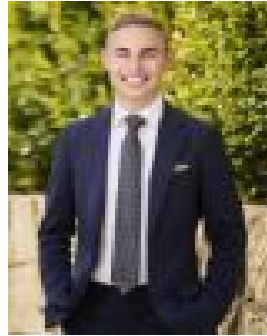
Parkings: 2

Area: 523 m2

Type: House



Ross Whiston
0878068227



Bailey Truscott
0452267602

\$694,000

Ross Whiston of Ray White Gawler East proudly presents 15 Harvey Crescent, Evanston South, a modern family haven just a stone's throw away from Trinity College! Nestled in a fantastic area ideal for young families, this home offers the perfect blend of convenience and comfort, with parks nearby for endless outdoor enjoyment. Boasting four double bedrooms with built-in robes, two bathrooms, and an automatic double garage, this residence is designed to accommodate the needs of a growing family with ease. The low-maintenance yards ensure that upkeep is a breeze, allowing you more time to relax and enjoy your surroundings. Step inside to discover a well-presented interior featuring floor-to-ceiling tiling in the ensuite, adding a touch of luxury to your everyday routine. The open-plan living area creates a spacious and inviting atmosphere, perfect for gatherings and quality family time. The kitchen is a standout feature, boasting a stylish herringbone splashback, square edge benchtop with stunning waterfall ends, and 90cm stainless steel appliances that will delight any home chef. With a dishwasher and a walk-in pantry for added convenience, meal preparation becomes a pleasure rather than a chore. The laundry is thoughtfully designed with overhead cabinetry for ease of storage, ensuring a clutter-free living space. Outside, an undercover alfresco area provides the perfect setting for entertaining guests while overlooking the low-maintenance yard. A serene retreat for relaxation and enjoyment. Additionally: Year Built - 2022 Land Size - 523m² (approx.) Easement - No Local Council - Town of Gawler Zone - MPN - Master Planned Neighbourhood Don't miss out on the opportunity to make this modern family home yours. Schedule a viewing today and experience the epitome of contemporary living at 15 Harvey Crescent, Evanston South - call Ross Whiston on 0418 643 770 to register your interest today! Want to find out where your property sits within the market? Have one of our multi-award-winning agents come out and provide you with a market update on your home or investment! Disclaimer: Every care has been taken to verify the correctness of all details used in this advertisement. However, no warranty or representative is given or made as to the correctness of information supplied and neither the owners nor their agent can accept responsibility for error or omissions. Ray White Gawler East RLA 327 615