

# 15 Kilarnie Boulevard, Wollert, Vic 3750

## Residential Land For Sale

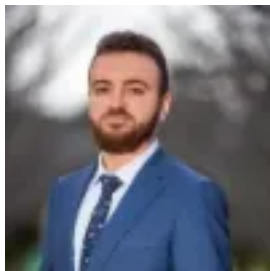
Friday, 24 May 2024



15 Kilarnie Boulevard, Wollert, Vic 3750

Area: 392 m2

Type: Residential Land



Fadi Yousif

0450817568

## Contact Agent

An exceptional opportunity awaits at 15 Killarney Boulevard, Wollert. This 392-square-meter park-facing lot offers the perfect canvas to build your dream home in one of Wollert's most desirable neighborhoods. Key Features:- Prime Location: Situated in a serene, park-facing position, providing beautiful views and a tranquil environment.- Generous Size: 392 square meters of flat, ready-to-build land, offering ample space for various home designs.- Excellent Orientation: Maximizes natural light and park views, ideal for creating a comfortable and inviting home.- Convenient Access: Close to schools, shopping centers, public transport, and other essential amenities.- Community Living: Located in a family-friendly area with parks, walking trails, and recreational facilities nearby.- This plot is perfect for those looking to create a custom home tailored to their lifestyle in a thriving community. Don't miss out on this unique chance to secure premium land in Wollert.