

15 Lipton Mews, Atwell, WA 6164

Sold House

Wednesday, 13 September 2023



15 Lipton Mews, Atwell, WA 6164

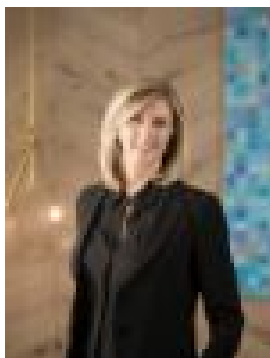
Bedrooms: 4

Bathrooms: 2

Parkings: 2

Area: 653 m2

Type: House



Suzanne Brown

0893149888

\$660,000

Welcome to 15 Lipton Mews, Atwell - a beautiful 4-bedroom, 2-bathroom haven that you'll want to call home! Constructed in 1994 and meticulously maintained, this property offers everything a family desires. Step inside to discover a well-designed floor plan that effortlessly caters to all your family's needs. With separate dining, family, living, and games room areas, there is ample space for large gatherings and entertaining. The well-equipped kitchen and extensive bench space makes meal preparation a breeze. Stay comfortable all year long with the convenience of evaporative cooling and the cozy warmth of a log fire heater. The generous bedrooms provide plenty of natural light, and the master bedroom comes with its own ensuite - your private sanctuary for relaxation. The main bathroom has a bath and separate toilet and has been thoughtfully designed for family living. The property sits on a generous 653 sqm land with a fully fenced backyard, offering a safe and secure space for your kids and pets to play freely. A garden shed provides storage, while the outdoor entertaining area beckons you to host friends and family on weekends or simply unwind after a busy week. Not to mention the rear access through double gates with room for a trailer or campervan. Located in the highly sought-after suburb of Atwell, this property is a dream come true. Close to schools, parks, and public transport, convenience is at your fingertips. Enjoy easy access to local shopping, dining options, freeway and major roads for easy commuting. This property is currently vacant, and we estimate current rent for this property to be around \$650 per week for the astute investor or is ready to move it on settlement.

FEATURES INCLUDE:

- 4 Bedrooms
- 1 Master Bedroom with ensuite and walk in robe
- 3 Good size bedrooms with built in robes
- 2 Bathrooms
- Open plan living and dining
- Separate Games room
- Gas cooktop
- Log fire heater in living
- Ducted evaporative air-conditioning
- Good size backyard
- Double Carport

LOCATION INFORMATION:

- 750 m to Atwell Primary School
- 750 m to Mosedale Park
- 900 m to Stargate Shopping Centre - Atwell
- 1.9 km to Atwell College
- 1.6 km to Cockburn Gateway Shopping City
- 3.4 km to Jandakot Primary School

FINANCIAL INFORMATION: Council rates: \$1,900 per annum (approx.) Water rates: \$1,303.65 per annum (approx.) Don't miss out on this incredible opportunity. Take the first step towards your dream home! To view this gorgeous family home please call Suzanne Brown on 0417 916 220. We have, in preparing this advertisement, used our best endeavours to ensure the information contained is true and accurate, but accept no responsibility and disclaim all liability in respect to any errors, omissions, inaccuracies or misstatements contained. Prospective purchasers should make their own enquiries to verify the information contained in this advertisement.