

# 15 Mackenzie Street, Annerley, Qld 4103

## House For Sale

Friday, 2 February 2024

15 Mackenzie Street, Annerley, Qld 4103

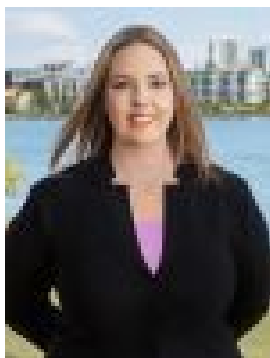
Bedrooms: 2

Bathrooms: 1

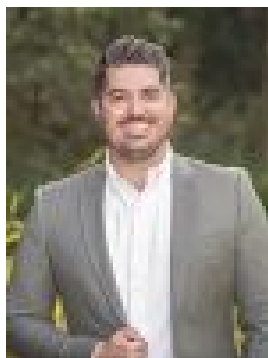
Parkings: 1

Area: 405 m2

Type: House



Lauren McHutchison  
0406993206



Matt Slater  
0413980690

## For Sale By Negotiation

Why you'll love it: In a quiet leafy street, this charming Queenslander fuses traditional craftsmanship with contemporary appointments to create a haven of timeless luxury. The home features flowing living and dining zones, a renovated country-feel kitchen and two spacious airy bedrooms, both with built-in wardrobes. The versatile lower level has scope to expand the existing floor plan (STCA). Outside, there's a covered entertaining deck with steps to a lush back yard where kids and pets can play. Nestled in Annerley, you'll experience the perfect blend of tranquility in a suburban environment while having convenient access to amenities, schools (Junction Park & Yeronga State High School catchments), and public transport within walking distance. It's a lively community that caters to families, working individuals, and all those in search of an exceptional lifestyle.

Key features:- Flowing lounge and dining area, dedicated study/sunroom- Elevated alfresco deck, private yard amid lush surrounds- Renovated kitchen has Smeg gas cooktop/oven, dishwasher- Accommodation includes two airy bedrooms with built-ins- Contemporary rain shower bathroom with black tapware- 3.2m high ceilings, timber floors, VJ walls, casement windows- Ducted air conditioning ceiling fans & plantation shutters- Freshly painted internally, 6.24kw solar system- Electric gate & single carport for secure off street parking- Downstairs workshop, powder room & ample storage- Provides scope to redesign lower level and capitalise- Zoned for Junction Park State and Yeronga State High

Best suited for: Wide range of buyers looking for a charming home with modern luxuries, privacy and scope to capitalise in a lifestyle pocket of exciting growth.