

15 Manchester Road, Gymea, NSW 2227

CENTURY 21

Sold House

Wednesday, 14 February 2024

15 Manchester Road, Gymea, NSW 2227

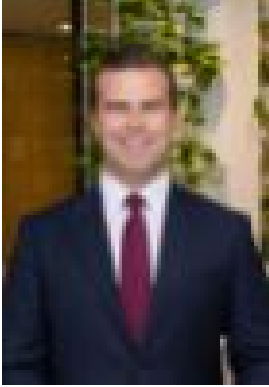
Bedrooms: 3

Bathrooms: 1

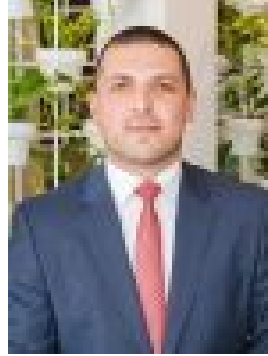
Parkings: 2

Area: 548 m2

Type: House



Kieran Rees
0402364050



Ali Oksuz
0419469459

\$1,485,000

This well-maintained, single level home offers unlimited potential suiting the young family or developer. Displaying light-filled interiors, multiple living spaces and a level lawn, this charming family home is conveniently situated only moments to Westfield Miranda and Gymea train station. Corner position with a Lot size of approximately 548sqm, boasting potential to renovate, rebuild or recreate the existing residence and reap the rewards.- Brick Veneer construction provides versatility and practicality- Formal lounge, dining area and casual family living- Generous kitchen with ample bench and storage space- Wide manicured street frontage reveals undercover front porch- Single lock-up garage, undercover carport, driveway parking- Moments from Westfield Miranda, Gymea Village and Station