

15 Mountain Ash Avenue, Ashwood, Vic 3147



Sold House

Friday, 11 August 2023

15 Mountain Ash Avenue, Ashwood, Vic 3147

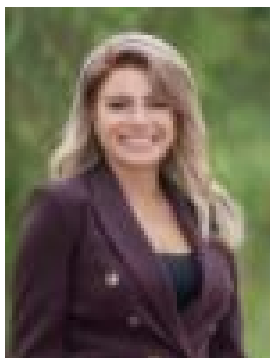
Bedrooms: 5

Bathrooms: 2

Parkings: 3

Area: 728 m2

Type: House



Christine Bafas
0427835610



Stephen Le Get
0438558870

\$1,695,000

Auction Live Streaming via GAVL. Jellis Craig clients have the opportunity to watch live property auctions. Register through www.gavl.com.au and follow the property link: <https://x5u9a.app.goo.gl/wQDp> Please download the free GAVL app. With a captivating façade and versatile layout, this radiant home delivers an exceptional level of comfort and convenience in a highly prized neighbourhood. The spacious lounge and dining room are filled with natural light, overlooking a stylish kitchen appointed with an island breakfast bar, stainless-steel appliances, and terrific storage space. On this level, you will find two bedrooms and a quiet home office/5th bedroom with a built-in desk and bookshelves, and a main family bathroom with a separate shower room and toilet. Upstairs, a comfortable retreat opens to a balcony with sweeping district and treetop views, providing the ideal spot to enjoy a morning coffee before the day gets underway. Two additional bedrooms each feature walk-in robes, Juliet balconies and use of the relaxing spa bathroom with an oversized shower. Beautifully maintained, the backyard features a covered alfresco zone, a large gazebo nestled in the garden and endless room for spending time outdoors with family and friends. Amongst the highlights are ducted heating/vacuuuming, evaporative cooling, energy-saving HRV ventilation system, new carpet upstairs, rainwater harvesting system servicing 2 toilets and laundry with 9000L of water storage, irrigation system, large shed, carport, and a detached double garage currently being used as a photography studio - a multi-purpose, versatile space that could be repurposed as a games room, teenager's retreat, or a home office. In a lifestyle location, walking distance from Gardiners Creek Reserve, Parkhill Primary School, and Ashwood Secondary College (both zoned), with proximity to bus and tram services, Jordanville Train Station, Deakin University, several golf clubs, Monash Freeway and Chadstone Shopping Centre.