

15 Patrick Court, Mitcham, Vic 3132



Sold House

Wednesday, 25 October 2023

15 Patrick Court, Mitcham, Vic 3132

Bedrooms: 3

Bathrooms: 2

Parkings: 2

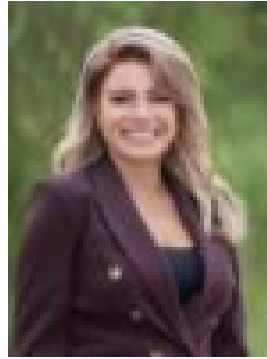
Area: 553 m2

Type: House



Charles Shi

0423633253



Christine Bafas

0427835610

\$1,470,000

Auction Live Streaming via GAVL. Jellis Craig clients have the opportunity to watch live property auctions. Register through www.gavl.com.au and follow the property link: <https://x5u9a.app.goo.gl/q34R> Please download the free GAVL app. Resting in a blissfully quiet court, this elegant home offers a remarkable lifestyle, showcasing signature style and quality craftsmanship. The flexible floorplan easily adapts to suit your family's requirements, introduced by an elegant bay-windowed lounge and a formal dining room featuring quality drapes and ceiling roses, alongside a home office for those studying or working remotely. Continue through to an open plan family room, dining zone and a study nook so parents can keep an eye on their children doing homework, overseen by a gourmet kitchen equipped with an induction cooktop, twin ovens, a breakfast bar for meals on the go and excellent storage space. The secluded master bedroom features a walk-in robe and ensuite, paired with two additional robed bedrooms and a central family bathroom placed at the rear for harmonious family living. Outdoors, the sunny north-facing backyard invites relaxation, featuring a covered alfresco zone with a mains-plumbed BBQ and a fabulous pizza oven that transforms your outdoor space into a pizzeria! Some of the many highlights include ducted heating, evaporative cooling, security doors, a garden shed, veggie garden, watering system and a double auto garage. From this outstanding location, it's a short walk from Heatherdale Train Station and Somers Trail, zoned for Antonio Park Primary and Mullauna College, and close to Eastland Shopping Centre, Eastlink, Mitcham shops and Railway Station, a variety of local parks, walking trails and recreational facilities.