

**15 Sandy Street, Nunawading, Vic 3131**



**House For Sale**

Thursday, 30 May 2024

15 Sandy Street, Nunawading, Vic 3131

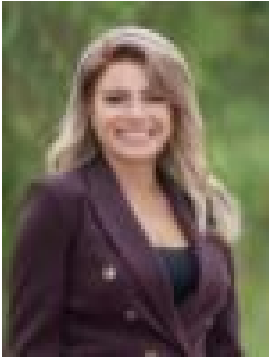
**Bedrooms: 3**

**Bathrooms: 2**

**Parkings: 3**

**Area: 707 m2**

**Type: House**



Christine Bafas  
0427835610



Charles Shi  
0423633253

**\$1,050,000 - \$1,150,000**

In a desirable, family-friendly location, this heartwarming home is an easy walk from Tunstall Park and bus routes, delivering a world of comfort and future potential. Whether you're looking for somewhere to settle or want to utilise the generous land size of approx. 707sqm to build a new home or modern townhouses/units, buyers will not run out of options! The light-filled interior includes a welcoming lounge room, separate dining, and a practical kitchen with a pass-through for added convenience. Accommodation is flexible and well-zoned, featuring two bedrooms and a central bathroom, plus a connected in-law/teenager's suite with a living area, bedroom, bathroom and private access to a covered alfresco zone and established backyard. Extras include gas space heating, split-system air conditioning, timber floors, outdoor awnings, a double carport and an oversized lock-up garage with workshop space. In an outstanding location, the home is zoned for Whitehorse Primary School and Blackburn High, and close to Nunawading Community Hub, Explorers ELC, Little Raskals Kindergarten/Childcare, the Eastern Freeway/EastLink, Nunawading Train Station, shops and cafes, with proximity to Blackburn Square, Box Hill Central's transport interchange and popular dining district, Westfield Doncaster, Blackburn Lake Sanctuary and Deakin University.