

# 15 Seahorse Court, Karalee, Qld 4306

## House For Sale

Tuesday, 5 December 2023



15 Seahorse Court, Karalee, Qld 4306

**Bedrooms: 4**

**Bathrooms: 3**

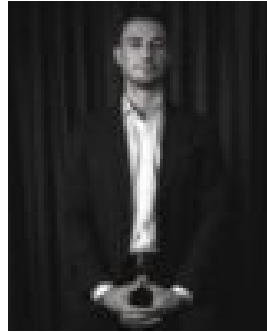
**Parkings: 6**

**Area: 4068 m2**

**Type: House**



Daniel Parsons  
0466461772



Brady Chant  
0431966045

## FOR SALE

Unlock the potential of this prestigious 2-story brick home nestled on over an acre of land in one of Karalee's most esteemed estates. With a sprawling 12m x 6m shed and an additional 6m x 6m carport, this property is a blank canvas awaiting your personal touch, offering untapped potential in a tranquil cul-de-sac setting. Upon entry you'll be captivated by the sheer untapped potential on offer, the perfect opportunity for anyone looking to get their toes into the prestigious Karalee market. The upper level of this home hosts four spacious bedrooms, each fully carpeted and equipped with ceiling fans and built-in robes. The master bedroom boasts a walk-in robe and an ensuite, while the main bathroom offers a stand-alone shower and a bathtub, catering to your every need. On the lower level, you'll be impressed by the sheer space on offer. Two spacious living areas are serviced by an air conditioning unit, ensuring comfort and versatility. A formal dining room adds an elegant touch to your gatherings. While all being serviced by the split system air-conditioning unit to keep you comfortable year-round. The kitchen is a chef's dream, featuring modern appliances such as a dishwasher, electric cooktop stove, and oven. It's a hub for culinary creativity and family gatherings. The garage has been thoughtfully enclosed and fitted with an air conditioning unit, making it a versatile space perfect for use as a workspace or an additional utility room. Step outside and discover a true retreat. The outdoor entertaining area is the perfect place to unwind, escaping the hustle and bustle of everyday life. With over an acre of land at your disposal, this property offers the space you've been craving. A massive 12m x 6m shed provides ample storage for all your toys, and an additional 6m x 6m carport adds to the convenience, not to mention this property is fitted with solar panels, ensuring not only a reduced environmental footprint but also potential cost savings on your energy bills. This property is fitted with a top-of-the-line Septech septic system, providing peace of mind for your sanitation needs. This home offers the perfect blend of luxury, space, and potential. Don't miss out on the opportunity to make it your own and enjoy the prestigious Karalee lifestyle to the fullest. Nearby Locations: • 8 minute - Karalee Shopping Village • 4 minutes - Karalee State School • 11 minute - Colleges Crossing Recreation Reserve • 18 minutes - Ipswich CBD Listing agent: Daniel Parsons & Charles Kimmorley Don't be disappointed, call us now – We are waiting for your call. NGU Real Estate Ripley – The Kimmorley Group Results Speak Louder Than Words Disclaimer: NGU Real Estate Ipswich has taken all reasonable steps to ensure that the information in this advertisement is true and correct but accept no responsibility and disclaim all liability in respect to any errors, omissions, inaccuracies or misstatements contained. Prospective purchasers should make their own inquiries to verify the information contained in this advertisement.