

15 Settlers Close, Castle Hill, NSW 2154

House For Sale

Tuesday, 21 November 2023

15 Settlers Close, Castle Hill, NSW 2154

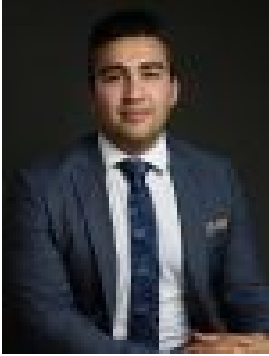
Bedrooms: 5

Bathrooms: 3

Parkings: 4

Area: 900 m2

Type: House



Iman Makari
0402420168



Mitchell Hubbard
0415655221

Contact Agent

Sitting proudly on the high side of a quiet cul-de-sac, with a commanding street presence this property offers a rare opportunity to secure a 5-bedroom family home in the highly sought after First Farm Estate. This home offers a variety of generous living spaces, complete with large windows providing warmth and light throughout the home, these are accompanied by timeless curved bay windows in the dining room. The lounge room is completed by the enchanting timber fireplace, oozing ambience. At the heart of the home sits the kitchen, which has been recently renovated with ample storage and bench space for entertaining friends and family. The five bedrooms are all generously appointed, the master bedroom boasts an expansive ensuite and spacious walk-in wardrobe, while two additional upstairs bedrooms also feature convenient walk-in wardrobes. Offering a huge 4 car garage this home should provide enough space for all the toys, regardless of the hobby you enjoy. Only 550m from the nearest bus stop, with easy access to Castle Towers, the Metro station and the Heritage Park this location makes for idyllic family living combined with ultimate convenience to suit busy lifestyles.

Features: Updated kitchen Freshly paint interior and facade 3 bedrooms include walk-in wardrobes Resurfaced roof Replaced gutters New Ducted A/C unit New Downlighting Timber fireplace Automatic - 4 car garage 604 Bus stop (550m) In-ground saltwater Pool, with water feature. Potential for in-law accommodation, including fifth bedroom/study. Private, high side location. Large frontage, commanding street presence.

Location Benefits: Heritage Park: 650m Bus Stop: 550m Castle Towers: 1.4km Castle Hill Metro: 1.4km Castle Hill Library: 1.8km Castle Hill RSL: 2.3km Fred Caterson Sports Reserve: 3.3km