

15 Tatura Crescent, Fulham Gardens, SA 5024

House For Sale

Thursday, 1 February 2024



15 Tatura Crescent, Fulham Gardens, SA 5024

Bedrooms: 4

Bathrooms: 3

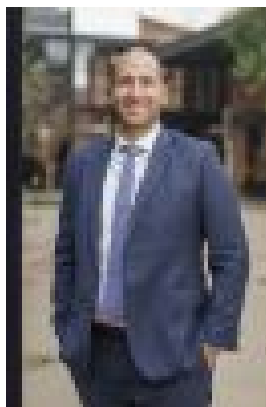
Parkings: 2

Area: 389 m2

Type: House



Peter Kiritsis



Alex Ghinis
0455386102

Expressions of Interest by Tuesday 20th Feb 12pm

Upcoming Inspections // Saturday 3rd February 3:00pm - 3:30pm // Wednesday 7th February 6:30pm - 7:00pm

Light, fluidity, and incredible scale. A statuesque design, tucked quietly away in Tatura's tight circle, will exceed the most discerning entertainer's demands with a side serve of Linear Park and Henley Square leisure. Four sumptuous bedrooms, two optional master suites, 3.5 luxurious bathrooms, swathes of timeless marble, plus dual living areas surrendering to the home's crisp and harmonious whites - all bar the decadent backdrop of the alfresco BBQ kitchen - tallying this epic home's designer extras is an exhausting task. And as twin SUVs fit securely in the dual garage, the garage sweeps you secretly inside to a wide foyer befitting its showpiece staircase that racks your prized, bottled vintages beneath. You can go one of two ways from here... to the sanctuary of the downstairs master with walk-in robes and sparkling ensuite or follow the beam of light into open plan living. It's a win/win situation. Pushing the envelope beyond many contemporary designs, three of the home's four bedrooms boast generous ensuites, three have walk-in robes, and the upper level caters to teens, guests or live-in company with a central 2nd living area dominating the space with immeasurable legroom. Downstairs, a silken wave of marble puts the finishing luxe on the sleek, open plan kitchen concealing a cavernous butler's wing; stainless Smeg appliances uphold the design's enduring quality. Ultra-wide glass sliders transition the flow from inside to out and putting a dramatic exclamation mark on all-seasons entertaining, the inbuilt BBQ, bar fridge, accent lighting and sculptural garden water feature will outshine anything on the menu. Lush lawns, exposed aggregate concrete, and quality fencing to keep the kids in sight and occupied on a completely maximised low-care allotment... what next? Lifestyle unlimited. A wander to Linear Park, local cafes along Henley Beach Road, and a direct trajectory to Henley Beach and the Square quicker than you can say: 'Let's eat out.' You'll be sold. Tatura is perfection:

- Statuesque modern design maximising a 389m²* allotment
- All-weather alfresco entertaining with an inbuilt BBQ & bar fridge
- Secure internal access via garage
- Feature foyer staircase with wine display racks
- 22kW ducted R/C A/C system
- Luxury 1200mm x 1200mm RockSalt White Gold Tiles to Ground floor & upstairs living
- 2.7m ceilings
- LED downlights
- Striking marble benchtops & surfaces
- Chic kitchen with 900mm Smeg cooktop & dishwasher + concealed butler's wing
- 3 King-sized bedrooms with WIRs - 2 as optional master bedrooms
- Bedrooms 3 & 4 offer a "Jack & Jill" shared ensuite bathroom
- 4 WCs including a downstairs guest powder room
- A 6-minute drive to Henley Square
- Zoning for Henley High School

And much more... *Measurements are approximate.* We make no representation or warranty as to the accuracy, reliability or completeness of the information relating to the property. Some information has been obtained from third parties and has not been independently verified.