

15 The Ridge, Mount Eliza, Vic 3930

House For Sale

Saturday, 11 May 2024



15 The Ridge, Mount Eliza, Vic 3930

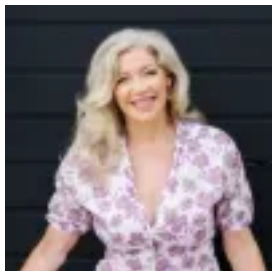
Bedrooms: 5

Bathrooms: 4

Parkings: 2

Area: 3388 m2

Type: House



Liz Todd

0397877171

3,850,000 - \$4,235,000

Boasting privacy delivered by surrounding tree-top aspects, neighbouring pine forest, and a discrete street frontage, this stunning residence presents a creative design complimented by an astonishing array of inclusions to ensure life's met with substantial ease and luxury. With European elegance in a distinguished setting, this sensational six bedroom, four bathroom masterpiece delivers a private, sanctuary-like space, completely removed from the everyday world. An exclusive celebration of luxurious quality, breathtaking proportions and architectural indulgence seamlessly harmonise across the 3,384sqm (approx.) landscape to invite an opulent Mount Eliza lifestyle. Revealing itself through automated front gates, a tree-lined drive builds suspense before unveiling a sensational concrete facade accented by design-driven landscaped grounds and circular drive. Opening through a grand glass entrance, the home presents panned ceilings, expansive dimensions and polished floorboards, inviting exploration through double doors, where a dramatic entertaining domain awaits. Encompassing lounge (WFH), dining and state-of-the-art, stone-finished kitchen complete with two integrated dishwashers and fridge/freezer, generous island bench and a streamlined aesthetic, this spectacular entertaining domain effortlessly blends with an elevated and sweeping rear alfresco, to deliver easy everyday family living. Continuing the theme of spatial dimensions, the first floor further unveils a home office with balcony access, master suite with balcony access, dressing room and spacious stone-finished ensuite complete with feature bath and garden aspects, powder room, and 5person lift. Spoilt for choice, the ground floor cements the home's firm focus on entertaining, delivering a guest suite complete with storage and ensuite, and stunning entertaining domain inclusive of stone-finished kitchenette with servery window and integrated dishwasher, lounge/cinema (surround speaker unit) and lift access. A discrete hallway reveals four further bedrooms, each with their own RC/AC and one with ensuite and two with BIRs, laundry with chute, and central main bathroom. Disclaimer: In preparing this information, Coastal Agents has relied in good faith upon information provided by third parties and has made best endeavours to ensure that the information is accurate. However, the accuracy of the information provided to you (whether written or verbal) cannot be totally guaranteed. If you are considering the purchase of this property, please make all necessary enquiries to satisfy yourself that all information is accurate.