

15 Tomewin Street, Rochedale, Qld 4123

House For Sale

Saturday, 13 April 2024



15 Tomewin Street, Rochedale, Qld 4123

Bedrooms: 4

Bathrooms: 2

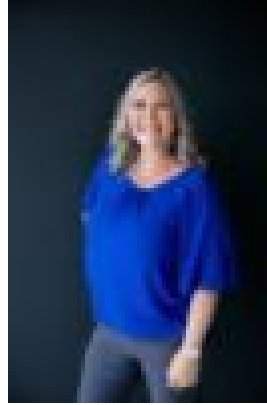
Parkings: 2

Area: 503 m2

Type: House



Daniel Husarek
0450741626



Janelle Platt
0738416449

Offers Above \$1,950,000

Chapter One: The Arrival
Rosedale, a picture-perfect suburb that offers a sublime backdrop to raise your family, and enjoy the finer things in life. As you turn into Tomewin Street, the elegance of Hydeberry Estate surrounds you. Each home a masterpiece, showcasing grandeur and contemporary design. Nestled on the elevated side of the street, your eyes are drawn to number 15. A 503m² block offering captivating views of quality residences and distant views of the surrounding area. A striking façade embodying the essence of prestige and convenience with contemporary finishes hinting at the luxury that lies within.

Chapter Two: The Entrance
Stepping through the extra-large timber door, you're greeted by a wide entry hallway and stunning glossy porcelain tiles setting the tone for the spacious luxury that awaits. Every detail of this exquisite home has been designed to emphasize family living. Its expansive and sophisticated interiors, blending sleekness with style, provide a generous space for relaxation and seamless entertaining. The 2.7-meter high ceilings create a sense of extravagance, making you feel like you've entered a world of opulence.

Chapter Three: The Heart of the Home
As you move further into the home, the enormous living space provides ample room for everyone to come together, creating a central gathering hub. It is where tonnes of family memories will be made. Culinary enthusiasts will delight in the modern kitchen, anchoring the living areas and blending indulgence with functionality with a view to inspire, and delight those who love to cook. Spiced with trendy pendant lighting and a striking splashback, it comes complete with 900mm dual fuel oven, a 40mm stone waterfall island bench, soft-close cabinetry, and a huge walk-in pantry.

Chapter Four: The Upper Level
Ascending the decadent open timber tread staircase with chic glass balustrades you'll find a huge carpeted rumpus for more intimate hosting, private family enjoyment or children's play. At the front of the home the master suite is a sanctuary of indulgence. With a double his & hers walk-in robe, and a private balcony with beautiful North facing views of the area, this is a retreat like no other. The ensuite, adorned with floor-to-ceiling tiles, a double vanity, and a spacious shower, epitomizes lavish living at its finest. This impressive abode features a total of 3 additional bedrooms, one with a walk-in robe and two with built-in robes, ensuring ample space for family and guests. Serviced by the main bathroom, a freestanding bathtub awaits, offering a luxurious retreat for the whole family. Whether it's a playful bubble-filled adventure or a relaxing soak to unwind, this space promises moments of tranquillity and indulgence.

Chapter Five: Outdoor Bliss
The tiled alfresco area invites you to embrace the outdoors, with retractable outdoor screens and ceiling fan, this space offers year round entertaining options. The low-maintenance, sun-lit backyard offers a serene retreat for relaxation, or a generous greenbelt of playtime fun for the kids and fur-babies alike, while the landscaped gardens add to the beauty of the surroundings. The bonus: here, there is more than enough room to add in a pool for those summer fun days too!

Chapter Six: The Extras
A large, separate office at the front of the home provides a convenient and versatile workspace, while the private, fully insulated media room offers a family retreat for moments of cinematic entertainment and popcorn pleasures on those cosy nights in. With loads of notable features:

- Full-length sheer curtains downstairs & blackout blinds in bedrooms
- Ducted and zoned air conditioning throughout
- Sealed exposed aggregate driveways and pathways
- Rear access to property through garage
- Crim-safe screens on downstairs sliding doors
- Over \$150k in upgrades during the 20/21 construction

Chapter Seven: The Lifestyle
Living in Hydeberry Estate is more than just owning a home—it's a lifestyle. With parks, playgrounds, schools, shops, cafes, and restaurants all nearby, everything you need is right at your doorstep. 15 Tomewin Street is more than just a house—it's a family home where luxury meets life, love and living!

Chapter Eight: The Conclusion
An inspection is a must! Don't miss this opportunity to experience the epitome of luxury living in Rosedale. Pop in to our next open home and let us show you around, what could be, your new home!

The Epilogue: This is where the story really begins... the first day in your new home...imagine....Contact us today to register your interest and start living the life you've always dreamed of!